

This Company Profile is prepared and published by PT. Indosino Energi for internal purposes and company strategy. All information contained in this document is confidential and intended only for parties who have received official authorization from PT. Indosino Energi. This document is not for public consumption and may not be published, distributed, or used by other parties without written permission from PT. Indosino Energi. Any duplication, distribution, or disclosure of information in this document without permission will be considered a violation of PT. Indosino Energi's copyright and intellectual property rights. All content, including but not limited to text, graphics, logos, and designs, included in this company profile is the property of PT. Indosino Energi and is protected by copyright law and other related regulations. This copyright covers all forms of information both explicit and implied. PT. Indosino Energi is not responsible for any loss or damage that may arise from the use or misuse of the information contained in this document. The information presented in this company profile is compiled based on accurate data and facts at the time of writing, but there is no guarantee that this information will always be timely or complete. PT. Indosino Energi reserves the right to modify, add, or delete any part of this document without prior notice. All such changes remain under the copyright of PT. Indosino Energi. By reading and using this document, you agree to all the terms stated above. If you have any questions or require further clarification, please contact PT. Indosino Energi through the designated official communication channels.

COMPANY PROFILE

As an academican, we will describe PT. Indo Sino Energi (ISE) in 2024, with a focus on its projects, products, and systems.

TABLE OF CONTENTS

About Company	01
President Message	02
Welcome Message	03
Company History	04
Our Tagline	05
Our Product	06
Values & Philosophy	07
Competitive Advantage	08
Our Business Plan	09
Contact Us	10





ABOUT COMPANY

Founded in 2020 our company stands strong in the mining, energy, chemical equipment, and support tools industry. We are committed to providing the best solutions for customers in terms of primary equipment, engineering services, and integrated systems for transportation, storage, and processing. With a focus on innovation and technological excellence, we meet the needs of customers from various industrial sectors by offering high-quality products and reliable services. Supported by an experienced and competent team, we deliver effective and efficient solutions to support the growth and sustainability of our clients' businesses. In conducting operational activities, we prioritize environmental sustainability and work safety, and are committed to contributing to sustainable development. Thus, we are not only a reliable business partner but also an agent of positive change in the industries and communities we serve.

Over the next year, PT. Indo Sino Energi is determined to expand its reach and increase market penetration in the mining, energy, chemical equipment, and support tools sectors. One of our main goals is to increase market share and enhance our brand presence in the regions we serve. We plan to achieve this through aggressive marketing strategies, innovative product development, and superior customer service. Additionally, we are committed to improving operational efficiency and productivity, focusing on the sustainable use of resources and waste reduction. Thus, we expect to achieve significant growth in company turnover and profits in the coming year.

"Indo Sino Energi" carries a strong and clear meaning in the company's vision and mission. "Sun" refers to the primary energy source, symbolizing strength, brightness, and sustainability. This reflects our commitment to leading the sustainable and environmentally friendly energy industry. "Pacific" represents tranquillity, peace, and sustainability, which are foundational in every step to ensure the sustainability of the environment and the communities where we operate. "Energy" highlights our company's main focus on providing innovative and sustainable energy solutions to meet customer needs and support sustainable economic growth. Therefore, PT. Indo Sino Energi is a leading energy service provider and a reliable partner in realizing a sustainable future for the industry and society.



Parulian Hutasoit

DIRECTOR

President Message

In 2024, PT. Indo Sino Energi revisited its original determination and made new progress. Throughout the year, the Company significantly contributed to energy conservation by accelerating the transition to greener development. We are committed to supporting the national vision of achieving carbon neutrality by 2060, and towards this end, we actively promote green production and the development of low-carbon energy.

For example, the Company recently launched a model project for hydrogen fueling stations and a micro-liquid petroleum gas (LPG) pipeline network. By making breakthroughs in technological innovation, we provide advanced solutions and products to our customers and empower industry development. We manage, track, and review our environmental performance, set management goals related to environmental governance, and adopt different approaches to risks at various levels to reduce overall emissions.



Welcome Message

Embrace risk in oil & gas; it leads to untapped opportunities. Courage to venture into the unknown reveals dormant potentials, driving innovation and progress in a complex industry landscape.


Christopher Halomoan

COMMISSIONER

Operating within the dynamic and challenging oil and gas industry, PT. Indo Sino Energi has the potential to strengthen its market position and seize growth opportunities through a bold risk-taking strategy. By adopting innovations in exploration and production technology, the company can access untapped reserves, enhancing efficiency and reducing costs. Diversifying its portfolio into alternative energy sources offers a hedge against global price fluctuations and capitalizes on clean energy trends. Moreover, expanding into new markets through strategic analysis and partnerships can unlock profitable opportunities. These steps, supported by comprehensive risk analysis and effective management, can lead to PT. Indo Sino Energi needs new avenues that bolster its position and affirm its leadership in the energy sector.

COMPANY HISTORY

PT. Indo Sino Energi, established in January 2024, focuses on sustainable energy, notably Type IV hydrogen cylinder technology and Mini LNG plants, aiming to advance Indonesia's energy sector through innovation, environmental stewardship, and social responsibility.

 Contains a brief history explanation of PT. Indo Sino Energi.



COMPANY HISTORY

PT. Indo Sino Energi, established in January 2024, is a dynamic entity in mining, energy, chemical equipment, and support tools, marking its inception as a firm committed to spearheading sustainable and innovative energy solutions. Within a short span, the company has positioned itself as a leader in clean energy technologies, mainly focusing on developing Type IV hydrogen cylinder technology and Mini LNG plants, demonstrating its dedication to advancing Indonesia's energy sector towards sustainability.

With a robust commitment to innovation, environmental stewardship, and social responsibility, PT. Indo Sino Energi quickly emerged as a trailblazer, aiming to reshape the energy landscape through cutting-edge technologies and sustainable practices. The company's business strategy, underscored by a commitment to quality, safety, and excellence, propels its mission to provide eco-friendly energy solutions while fostering economic growth and community well-being.

Throughout its inaugural year, PT. Indo Sino Energi has been fervently expanding its market reach, enhancing its technological capabilities, and establishing a reputation for reliability and strategic partnerships. The company's endeavours in clean energy ISE and Chemical and Environmental ISE underscore its holistic approach to innovation and sustainability, setting the stage for its continued growth and leadership in Indonesia's energy transformation journey.

As PT. Indo Sino Energi continues to remain steadfast in its vision to be at the vanguard of the clean energy revolution, contributing significantly to Indonesia's pursuit of sustainable development and energy independence, through strategic collaborations and an unwavering dedication to its values and objectives, PT. Indo Sino Energi is poised to make impactful strides in the energy sector, envisioning a future where it plays a pivotal role in Indonesia's sustainable energy narrative.



COMPANY PRESENTATION

Welcome to PT. Indo Sino Energi, where innovation meets excellence in the dynamic world of liquefied natural gas (LNG) development and operations. We are at the forefront of Indonesia's energy transformation, and our latest milestone, the LNG Receiving Terminal, is set to revolutionize energy supply in Central Java. This cutting-edge facility represents our unwavering commitment to expanding our asset portfolio, achieving operational excellence, and enhancing LNG handling capabilities.

At PT. Indo Sino Energi, our foundation is built upon a highly skilled and experienced team of business management professionals, engineers, technical experts, and supply chain specialists. Our extensive regional networks and proven track record in delivering exceptional investor value through diverse assets highlight our strategic positioning and strength within the industry.

Driven by a vision of sustained growth and relentless innovation, we are focused on enhancing our operational footprint and seizing significant development opportunities. Our strategic approach targets LNG storage and regasification assets, paving the way for swift development into full operational capacity. This aligns with our goal to unlock robust growth potential in a cost-effective manner, positively impacting Indonesia's energy sector and economy.

Our Business

Our Business

UPSTREAM

MAXIMISING RESOURCES FOR GROWTH

PT. Indo Sino Energi is a pioneering force in the energy sector, committed to the responsible development and operation of liquefied natural gas (LNG) terminals in Indonesia. Our business operations are grounded in innovation, technical excellence, and a forward-looking approach to energy infrastructure development. Here, we delineate the pillars of our business activities and our strategic vision for future growth.

LNG Terminal Development and Operations:

At the heart of our operations is the development and operation of LNG terminals. We leverage cutting-edge technology and deep industry insights to construct and manage state-of-the-art LNG facilities. The strategic development of the LNG Receiving Terminal in Central Java, with its robust infrastructure and advanced technology, exemplifies our commitment to expanding our asset portfolio and enhancing our operational capabilities. This facility, characterized by its extensive storage and regasification capacity, is pivotal to our growth strategy and operational footprint expansion.

Technical and Operational Excellence:

Our technical team, comprised of industry veterans and specialists, drives our success in the complex LNG terminal development landscape. From detailed engineering to efficient terminal operations, our activities adhere to the highest safety standards, environmental stewardship, and cost efficiency. We are dedicated to implementing best practices and innovative solutions that maximize operational efficiency and minimize our environmental impact.

Strategic Partnerships and Collaboration:

Understanding the importance of collaboration in our industry, PT. Indo Sino Energi actively seeks strategic partnerships that enhance our operational strength and expand our reach. These collaborations range from joint ventures with local and international companies to engagements with government entities and local communities. Our goal is to build mutually beneficial relationships that support sustainable development and contribute to the energy security of Indonesia and the region.

Commitment to Sustainability and Community:

Sustainability is integral to our business philosophy. We are committed to responsible environmental management, the welfare of the communities in which we operate, and the development of sustainable energy solutions. Through initiatives aimed at environmental conservation, community engagement, and social responsibility, we strive to make a positive impact beyond our operational achievements.



Empowering
Energy
Exploration
and
Development:
Propelling
Progress for
Tomorrow's
Sustainability.

Looking Forward:

As we look to the future, PT. Indo Sino Energi is poised for growth, driven by our strategic investments, operational excellence, and commitment to innovation and sustainability. We aim to enhance our contribution to Indonesia's energy sector, unlocking new opportunities for development and playing a crucial role in the global energy transition.

Empowering Energy Development: Propelling Progress for Tomorrow's Sustainability

At the core, PT. Indo Sino Energi is driven by a passion for harnessing the potential of Indonesia's rich natural gas reserves. This pursuit concerns meeting today's energy demands and securing energy resources for future generations. Empowerment comes from leveraging cutting-edge technology, innovative methodologies, and deep industry insights to develop and operate LNG terminals efficiently and responsibly.

Innovation in LNG Infrastructure:

By investing in advanced technologies and state-of-the-art equipment, PT. Indo Sino Energi can reduce the environmental footprint of our operations and improve the efficiency of LNG storage and regasification. This enhances the reliability of our services and minimizes disruptions to the ecosystem, aligning with our commitment to sustainable practices.

Development with Precision:

The development phase focuses on building infrastructure that maximizes operational efficiency while minimizing waste and environmental impact. Techniques such as utilizing Open Rack Vaporizer (ORV) technology for regasification and implementing comprehensive safety systems are examples of how PT. Indo Sino Energi aims to optimize performance and ensure environmental compliance.

OUR PROFILE



UPSTREAM



Empowering
Growth with
Sustainable
and
Innovative
Energy
Solutions for
a Brighter
Future

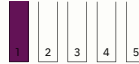
MAXIMISING RESOURCES FOR GROWTH

1. Exploration & Development of Oil & Gas:

- **Advanced Technology Use:** PT. Indo Sino Energi utilizes cutting-edge technologies such as seismic surveys and advanced drilling techniques to locate and identify underground oil and gas reserves. This involves comprehensive geological studies to ensure accurate assessments.
- **Efficient Extraction Methods:** Once reserves are identified, the company designs and implements efficient extraction methods to maximize resource recovery. These methods are focused on minimizing environmental impact while ensuring safety and operational efficiency.
- **Project Milestones:** The development timeline for projects like the Karamba Field and Mentawir E & P includes key milestones such as drilling, facility installation, and the start of gas production. These projects are carefully managed to ensure timely completion and adherence to safety and environmental standards.

2. Natural Gas Processing:

- **Desulfurization and Decarbonization:** PT. Indo Sino Energi employs advanced desulfurization and decarbonization technologies to purify natural gas. Techniques such as the ethanolamine method, sulfone-amine method, and membrane separation are used to ensure high-quality output.
- **NGL Recovery and Utilization:** The company also focuses on the recovery of natural gas liquids (NGLs) through processes like oil absorption, solid adsorption, and condensate separation. These processes enhance the efficiency and profitability of gas extraction operations.
- **Innovative Technologies:** The use of integrated skid-mounted devices for natural gas processing allows for flexibility and mobility, making it possible to operate in remote or challenging locations with minimal environmental impact.



We Are INDOSINO

OUR PROFILE

EXPLORATION

At PT. Indo Sino Energi, exploration serves as the cornerstone for sustainable growth. This comprehensive exploration initiative consolidates functions across Upstream Indonesia, Upstream International, and Indonesia Petroleum Management (IPM) to discover, acquire, extract, and deliver new resources, ensuring sustained long-term production. Our core activities encompass block acquisitions, basin evaluations, play generation, prospect maturation, and exploration drilling. The establishment of an Exploration Centre of Excellence (CoE) underscores our commitment to excellence, serving as a pipeline for developing hydrocarbon reserves, which in turn fosters sustained long-term production.

The CoE, comprising Basin and Petroleum System Analysis, Geological Solutions, Reservoir Geoscience, and Geophysical Solutions, aims to secure new resource additions by providing a structured pathway for the development of hydrocarbon reserves. This not only ensures the sustainability of our production but also aligns with our strategic goals of operational excellence, cost efficiency, and enhanced production capabilities.

**Core Exploration Activities**

1. **Block Acquisitions:** Strategically identifying and acquiring potential blocks that promise significant hydrocarbon reserves.
2. **Basin Evaluations:** Conducting thorough evaluations of basins to understand their potential and plan for effective exploration.
3. **Play Generation:** Developing new plays based on detailed geological and geophysical data.
4. **Prospect Maturation:** Maturing prospects to the drilling stage, ensuring they meet our stringent criteria for success.
5. **Exploration Drilling:** Drilling exploratory wells to discover new hydrocarbon reserves.

Exploration Centre of Excellence (CoE)

The CoE at PT. Indo Sino Oil & Gas is pivotal in driving our exploration success. It focuses on the following areas:

- **Basin and Petroleum System Analysis:** Detailed analysis of basins and petroleum systems to identify and prioritize exploration opportunities.
- **Geology Solutions:** Advanced geological studies and solutions to support exploration and development activities.
- **Reservoir Geoscience:** Comprehensive reservoir studies to optimize hydrocarbon recovery.
- **Geophysics Solutions:** Utilizing state-of-the-art geophysical techniques to enhance exploration accuracy.

Commitment to Excellence

PT. Indo Sino Oil & Gas is dedicated to maintaining a high standard of operational excellence. Our team of experienced professionals, equipped with advanced technological tools, ensures that every exploration activity is carried out efficiently and effectively. By integrating innovative approaches and maintaining a strong focus on environmental stewardship, we aim to contribute positively to Indonesia's energy sector and economy.

Future Outlook

As we move forward, PT. Indo Sino Oil & Gas remains committed to exploring new horizons and unlocking the vast potential of Indonesia's hydrocarbon resources. Our strategic focus on sustainable exploration and development will continue to drive our growth and contribute to the nation's energy security and economic prosperity. This tailored approach ensures that PT. Indo Sino Oil & Gas remains at the forefront of the industry, consistently delivering value to our stakeholders and contributing to a sustainable energy future.

OUR PROFILE



DOWNSTREAM

MAXIMISING RESOURCES FOR GROWTH

1. LNG Receiving Terminals Construction & Operations:

- **Site Selection and Design:** The company specializes in constructing and operating LNG receiving terminals. This process includes site selection, design, construction, commissioning, and ongoing operations. Each terminal is designed to facilitate the import and global distribution of natural gas.
- **Operational Safety and Efficiency:** PT. Indo Sino Energi places high importance on operational safety, efficiency, and environmental sustainability in its LNG terminal operations. Advanced technology and stringent safety protocols ensure smooth and reliable operations.

2. LNG Trading and Mini LNG Technology Promotion:

- **LNG Trading:** PT. Indo Sino Energi is actively involved in LNG trading, leveraging its extensive network and market expertise to facilitate the trade of liquefied natural gas globally. This includes the use of ISO tanks for flexible and efficient transportation.
- **Mini LNG Plants:** The promotion of Mini LNG technology is a key focus, enabling the production and distribution of LNG on a smaller scale. This innovative approach makes LNG more accessible and promotes its wider use in various markets, aligning with the company's commitment to sustainability and clean energy solutions.

3. Natural Gas Storage and Distribution:

- **ISO Tanks:** PT. Indo Sino Energi's ISO tanks provide a flexible and reliable means of delivering LNG to end-users worldwide. These tanks are designed for easy transportation via road, rail, or sea, ensuring efficient and safe delivery of natural gas.
- **Skid-Mounted LNG Products:** The company offers skid-mounted LNG products that cater to diverse industrial and energy needs. These products are designed for high efficiency and operational flexibility, making them ideal for use in various settings.



Empowering
Growth with
Sustainable
and Innovative
Energy
Solutions for a
Brighter Future



We Are INDOSINO

OUR PROFILE

PRODUCTION CAPACITY AND GROWTH PROJECTS

PT. Indo Sino Energi is a leading player in the energy sector, specializing in developing innovative and sustainable energy solutions. With a strong focus on Type IV hydrogen cylinder technology and Mini LNG plants, the company is committed to advancing Indonesia's energy infrastructure.

CONSTRUCTION AND EXPANSION

The construction of new Mini LNG plants and the expansion of hydrogen cylinder technology are underway. These projects aim to enhance energy storage and distribution, supporting Indonesia's transition to sustainable energy. PT. Indo Sino Energi is dedicated to maintaining high standards of safety and environmental stewardship.

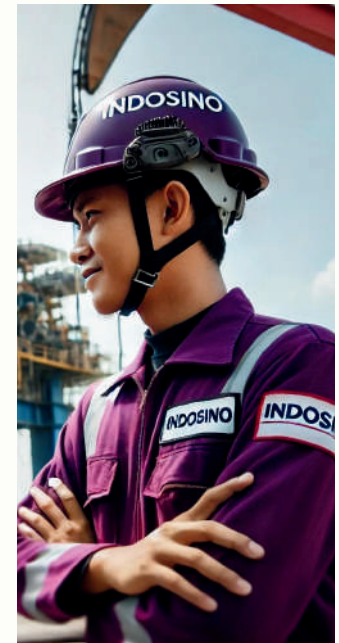
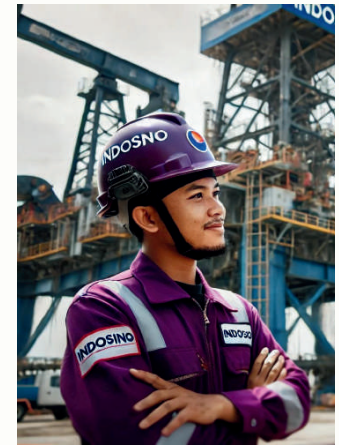
PIC has a refining capacity of 300 kbpd of crude to produce various refined petroleum products, strengthening our petrochemical product portfolio in key growth areas of differentiated and specialty chemicals. As one of the largest integrated refinery and petrochemical development in this region, PIC will diversify our feedstock reliability from gas-based to naphtha and expand our portfolio of products to include specialty chemicals.

**PETROCHEMICALS**

PT. Indo Sino Energi is also active in the petrochemical sector, offering a range of products and services that support the energy and industrial needs of its clients. The company's comprehensive approach integrates advanced technology and sustainable practices, setting new benchmarks in the industry.

INNOVATIVE SOLUTIONS

PT. Indo Sino Energi leverages cutting-edge technology to provide advanced energy solutions. The company's hydrogen cylinder technology and LNG facilities are designed to meet the highest efficiency and sustainability standards, ensuring reliable and clean energy for various industrial applications.



Company History

History of PT. Indosino Energi

PT. Indo Sino Energi embarked on its journey in the dynamic landscape of Indonesia's energy sector with a vision to pioneer in the development and operation of liquefied natural gas (LNG) terminals. Established in May 2022, PT. Indo Sino Energi was born out of a commitment to innovation and sustainable development, focusing on harnessing Indonesia's rich natural gas resources. Our flagship project, the LNG Receiving Terminal, exemplifies our dedication to expanding Indonesia's energy infrastructure and contributing to the nation's energy security.

Foundational Years and Strategic Expansion:

PT. Indo Sino Energi concentrated on building a robust foundation for long-term growth and expansion from its inception. The company's early years were marked by strategic investments in infrastructure and the pursuit of critical opportunities for LNG terminal development. A significant milestone was achieved in May 2022 when PT. Indo Sino Energi embarked on the development of the LNG Receiving Terminal, a testament to the company's capability to manage complex energy projects independently. This project paved the way for advancements in LNG storage and regasification, setting the stage for best practices in terminal operations while adhering to high environmental standards.

Achieving Operational Excellence:

Under visionary leadership, PT. Indo Sino Energi implemented cutting-edge innovations and intelligent solutions to meet industry challenges, enhance operational efficiency, and ensure safety and environmental stewardship. This sustainable and result-focused performance bolstered PT. Indo Sino Energi's reputation as a reliable industry leader capable of generating added value for stakeholders and making significant contributions to the national economy.



Strategic Acquisition and Development:

The company's history took a notable turn with the strategic development of the LNG Receiving Terminal in Central Java. The project, which includes comprehensive facilities for LNG storage, regasification, and distribution, marked a pivotal moment in PT. Indo Sino Energi's operational prowess. With its advanced technology and strategic importance, the Terminal became a cornerstone of PT. Indo Sino Energi's portfolio, underscoring the company's commitment to expanding its asset base and enhancing its capabilities.

Future Outlook:

As PT. Indo Sino Energi continues to navigate the complexities of the global energy market, it remains dedicated to its mission of empowering energy development and propelling progress toward tomorrow's sustainability. With a clear vision, a highly experienced team, and strategic assets like the LNG Receiving Terminal, PT. Indo Sino Energi is well-positioned for future growth and innovation.

The history of PT. Indo Sino Energi is a narrative of strategic growth, operational excellence, and a steadfast commitment to sustainability. As the company moves forward, it continues to set new benchmarks in the industry, driving positive change in Indonesia's energy sector and beyond.

Timeline of PT. Indosino Energi (ISE)

April 8, 2022 - Establishment of PT. Indo Sino Energi

On April 2022, PT. Indo Sino Energi was officially founded, marking the inception of a visionary enterprise dedicated to leading the development and operation of liquefied natural gas (LNG) terminals within Indonesia. Aimed at harnessing the country's vast natural gas resources through innovative and sustainable methods, PT. Indo Sino Energi is committed to excellence, environmental stewardship, and contributing positively to Indonesia's energy sector and economy.

From day one, PT. Indo Sino Energi was poised to significantly impact the industry, focusing on strategic growth, operational excellence, and developing partnerships to enhance its capabilities and reach. The foundation of PT. Indo Sino Energi represented not just the start of a new company but the beginning of a journey toward becoming a pivotal player in ensuring energy security and advancing sustainable development in Indonesia and beyond.

2022 - Foundation and Strategic Planning

- **Initial Infrastructure and Strategic Investments:** PT. Indo Sino Energi focuses on establishing a robust operational and strategic foundation by investing in essential infrastructure and technological resources for LNG terminal development and operations.
- **Strategic Partnerships:** Begins forming partnerships and alliances with local and international entities to enhance technical capabilities, operational efficiency, and market reach.
- **Talent Acquisition:** Prioritizes forming a team of highly skilled professionals, including engineers, business management experts, and environmental scientists, to drive the company's mission and vision.
- **Market Analysis and Opportunity Identification:** Conducts comprehensive market analysis and identifies key opportunities in the Indonesian LNG sector, laying the groundwork for future projects.
- **Sustainability Focus:** Develops a sustainability framework to ensure that all operations are conducted responsibly, focusing on minimizing environmental impact and maximizing social benefits.

This foundational year sets the stage for PT. Indo Sino Energi to emerge as a forward-thinking player in the energy sector prepared to tackle the challenges and opportunities of sustainable LNG development and operations.

May 2022 - Development of LNG Receiving Terminal

In May 2022, PT. Indo Sino Energi embarked on the development of the LNG Receiving Terminal, a significant milestone marking the company's capability to manage complex energy projects independently. This project paved the way for advancements in LNG storage and regasification, setting the stage for best practices in terminal operations while adhering to high environmental standards.

Achieving Operational Excellence:

Under visionary leadership, PT. Indo Sino Energi implemented cutting-edge innovations and intelligent solutions to meet industry challenges, enhance operational efficiency, and ensure safety and environmental stewardship. This sustainable and result-focused performance bolstered PT. Indo Sino Energi's reputation as a reliable industry leader capable of generating added value for stakeholders and making significant contributions to the national economy.

Early 2023 - Strategic Development and Expansion

In early 2023, PT. Indo Sino Energi marked a significant expansion of its operational portfolio with the strategic development of the LNG Receiving Terminal in Central Java. The project, characterized by its advanced technology and strategic importance, became a cornerstone of PT. Indo Sino Energi's asset portfolio, symbolizing the company's strategic vision to enhance its LNG storage and regasification capabilities within Indonesia's energy sector.

Future Outlook:

As PT. Indo Sino Energi continues to navigate the complexities of the global energy market, it remains dedicated to its mission of empowering energy development and propelling progress toward tomorrow's sustainability. With a clear vision, a highly experienced team, and strategic assets like the LNG Receiving Terminal, PT. Indo Sino Energi is well-positioned for future growth and innovation.

2024 (Target) - Full Operation of LNG Receiving Terminal

Targeting to achieve full operational capacity for the LNG Receiving Terminal by the fourth quarter of 2024. This future milestone aims to contribute significantly to PT. Indo Sino Energi's growth in Indonesia.

The history of PT. Indo Sino Energi is a narrative of strategic growth, operational excellence, and a steadfast commitment to sustainability. As the company moves forward, it continues to set new benchmarks in the industry, driving positive change in Indonesia's energy sector and beyond.



Letter from the Deputy
President Director

Delivering Innovation and Solutions for a Brighter Future



Deputy President Director
PT. Indo Sino Energi

Letter from the Deputy
General Manager

Embrace Risk in LNG Development; It Leads to Untapped Opportunities.

Courage to venture into the unknown reveals dormant potentials, driving innovation and progress in the complex landscape of LNG terminal operations. At PT. Indo Sino Energi, we believe that taking calculated risks in developing and operating LNG facilities opens doors to groundbreaking opportunities. Our journey with the LNG Receiving Terminal is a testament to our commitment to exploring new frontiers and harnessing Indonesia's rich natural gas resources. This bold approach not only propels us forward but also contributes to the sustainable development of Indonesia's energy sector, ensuring a brighter future for all.

The slogan "Embrace risk in LNG development; it leads to untapped opportunities. Courage to venture into the unknown reveals dormant potentials, driving innovation and progress in a complex industry landscape" highlights the importance of accepting risks in the LNG industry. It emphasizes that the bravery to explore the unknown can unlock untapped potentials, propelling innovation and progress in a complex industry landscape. For PT. Indo Sino Energi, this slogan can be interpreted as encouraging a bold and proactive approach to its operations.


This could involve pioneering new LNG terminal projects, such as the LNG Receiving Terminal, which, despite higher risks, could yield significant rewards in terms of capacity and market expansion. Additionally, the company could invest in research and development to innovate new technologies that enhance operational efficiency and reduce environmental impact. Diversifying its business portfolio to include integrated energy solutions or other related sectors could also reduce reliance on traditional LNG storage and regasification operations alone.

Strategic alliances or partnerships with other companies could share risks and tap into new opportunities, granting access to new technologies, expertise, and markets. Effective risk management ensures that the company can swiftly and efficiently respond to market changes or operational challenges. By embodying the principles encapsulated in this slogan, PT. Indo Sino Energi can position itself as an innovative and daring leader in the LNG industry while continually seeking new avenues for growth and sustainability.

By embracing risk and leveraging strategic innovation, PT. Indo Sino Energi is poised to unlock new potentials, drive industry advancements, and contribute to the sustainable development of Indonesia's energy sector. This forward-thinking approach not only positions the company for success but also ensures a resilient and adaptable operational framework in a rapidly evolving global energy landscape.

VISION & MISSION

Indo Sino Energi aims to lead the global LNG sector by leveraging expertise, innovation, and strategic partnerships, focusing on operational excellence, sustainable practices, and enhancing Indonesia's energy security.

 Contains a brief history explanation of PT. Indo Sino Energi

PT Indo Sino Energi is poised to become a vanguard in the global LNG sector by harnessing its deep industry expertise, fostering innovative technologies, and cultivating strategic partnerships. This organization is driven by a commitment to excellence and a profound dedication to sustainable environmental and economic practices. The mission of Indo Sino is not merely to operate within the energy sector but to redefine it, enhancing stakeholder value at every turn through the adoption of cutting-edge technological innovation, the application of robust business fundamentals, and the continuous pursuit of operational superiority.

The company's vision is to become synonymous with the epitome of a world-class LNG energy paradigm, where every action and decision is a step toward setting new industry benchmarks. Indo Sino's operational strategy is underpinned by a proactive approach to environmental stewardship, where sustainability is not an afterthought but a cornerstone of all processes. By integrating eco-conscious measures into its core operations, Indo Sino aims to lead by example, demonstrating that profitability and environmental responsibility can go hand in hand.

To achieve these lofty goals, Indo Sino has committed to an ethos of perpetual improvement, constantly seeking to enhance its methods and outcomes. This includes a relentless drive towards efficiency in LNG storage and regasification, the optimization of supply chain logistics through pipelines and ISO trucking, and adopting renewable energy sources where feasible. The company recognizes that its employees are its greatest asset; thus, it invests heavily in their professional development, ensuring that the entire team is well-versed in the latest industry trends and innovations that will shape the future of energy.

OUR VISION

Vision

PT Indo Sino Energi aspires to become a premier global LNG leader, leveraging our expertise, resources, and partnerships to drive progress and innovation. We are dedicated to continuously improving and expanding our operations, ensuring excellence in every facet of our business. Our commitment extends to managing resources responsibly and engaging stakeholders proactively, aiming for unparalleled success and esteemed recognition worldwide in the energy landscape.

Indo Sino Energi is poised to lead the global LNG sector by harnessing deep industry expertise, fostering innovative technologies, and cultivating strategic partnerships. Driven by a commitment to excellence and sustainable practices, our mission is to redefine the energy sector by enhancing stakeholder value through cutting-edge technological innovation, robust business fundamentals, and operational superiority.

Our vision is to become synonymous with a world-class LNG energy paradigm, where every action and decision sets new industry benchmarks. Our operational strategy is underpinned by proactive environmental stewardship, integrating sustainability as a core process. By demonstrating that profitability and environmental responsibility can coexist, Indo Sino aims to lead by example.

To achieve these goals, Indo Sino commits to perpetual improvement, striving for efficiency in LNG storage and regasification, optimizing supply chain logistics through pipelines and ISO trucking, and adopting renewable energy sources where feasible. Recognizing that employees are our greatest asset, we invest heavily in their professional development to ensure the team is well-versed in the latest industry trends and innovations shaping the future of energy.



OUR MISSION

Our Mission

- 1. Enhance Stakeholder Value:** Commit to generating sustainable and long-term value for shareholders, employees, partners, and the communities where we operate. This includes fostering economic growth, improving living standards, and contributing to social development.
- 2. Innovate in the Energy Sector:** Drive innovation in LNG storage and regasification through cutting-edge technology and research, positioning ourselves at the forefront of the industry. We aim to implement advanced techniques and processes to maximize efficiency and safety.
- 3. Embrace Operational Excellence:** Uphold the highest standards of operational excellence through continuous improvement, efficiency, and adherence to best practices in all aspects of our business. This includes optimizing supply chain logistics and ensuring the reliability of our LNG distribution networks.
- 4. Foster Responsible Resource Management:** Manage resources responsibly with a commitment to environmental stewardship and sustainable development, ensuring the well-being of future generations. Our operations are designed to minimize environmental impact and promote sustainable practices.
- 5. Cultivate Strategic Partnerships:** Develop and maintain strategic partnerships to enhance our technical expertise, expand our market presence, and improve our competitive edge. By collaborating with leading industry players, we aim to drive innovation and achieve mutual growth.

COMPANY VALUES

PT Indo Sino Energi aspires to become a premier global LNG leader, leveraging our expertise, resources, and partnerships to drive progress and innovation. We are dedicated to continuously improving and expanding our operations, ensuring excellence in every facet of our business. Our commitment extends to managing resources responsibly and engaging stakeholders proactively, aiming for unparalleled success and esteemed recognition worldwide in the energy landscape.

 Contains a brief Vision & Mission explanation of PT. Indo Sino Energi

PT IndoSino Oil & Gas is steadfast in the conviction that trust is the cornerstone of all enduring relationships within the company and with external partners and shareholders. This trust is not simply granted; it is painstakingly forged through consistently demonstrating reliability and integrity in every interaction. At IndoSino, every commitment is sacred, and every promise made is a promise kept, ensuring a foundation of accountability and mutual respect essential for sustainable success.

The culture at IndoSino is fueled by a genuine drive for success and excellence, permeating every facet of the organization. The company prides itself on a passionate, confident, open-minded, and innovative workforce. This dynamic environment stimulates the pursuit of novel solutions and breakthrough strategies, especially in the development of advanced technology and complete functions as demonstrated in projects like the LNG Terminal. Additionally, the company's commitment to continual learning ensures that its team remains competent and adept, equipped with the latest knowledge and skills to navigate the ever-evolving demands of the energy sector.

In the spirit of unity and cooperation, IndoSino cherishes the diversity within its ranks, fostering an atmosphere where every individual's unique experiences and perspectives are embraced. This harmonious approach to diversity breeds a culture of inclusivity and respect, where all members feel valued and motivated to contribute their best. Loyalty to the collective, adaptability in the face of change, and a collaborative spirit are the pillars that reinforce the company's ethos. IndoSino thrives on teamwork and the seamless integration of ideas, understanding that collective effort and open communication are the engines of innovation and efficiency that drive the organization's triumphs.

Company Values

Company Values

Value no. 01 - Trust is Earned

Trust isn't given; it's earned. By consistently delivering on our promises, whether to our colleagues, partners, or shareholders, we build successful relationships founded on accountability and mutual respect. This approach ensures the reliability of our operations, such as the regasification service and LNG trucking via ISO Truck and Train, which demand precision and trust.

Value no. 02 - Drive to Success

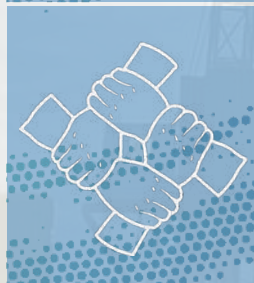
Our passion for what we do resonates in every aspect of our business. We are confident, committed, and open-minded, empowering us to pioneer new and improved solutions and approaches, whether analyzing data or at the negotiating table. This drive is exemplified by our commitment to advanced technology and complete functions in projects like the LNG Terminal.

Value no. 03 - Competent

We prioritize continuous learning and development, creating an environment where everyone is encouraged to seek new knowledge and skills. Our team has access to training programs, mentorship, and resources to grow professionally. This commitment to growth keeps us adaptable, innovative, and ready to meet industry demands, such as the evolving needs of the natural gas market in Central and East Java.

Value no. 04 - Harmonious

We value and celebrate diversity in all its forms. We recognize and appreciate the unique perspectives, backgrounds, and experiences each individual brings to our team. By embracing these differences, we foster a culture of inclusion and respect where everyone feels valued and empowered to contribute their best. This harmonious approach is vital for the collaborative efforts needed in large-scale projects like the LNG Terminal.

**Value no. 05 - Loyal**

As a company, working together is more powerful than working alone. Our team-oriented culture and flat hierarchy mean we value different ideas and perspectives to find the best solutions for our business. We succeed together when our company succeeds, which is evident in our joint efforts with partners in the Industrial Park to ensure the success of our LNG projects.

Value no. 06 - Adaptive

We're dedicated to constantly coming up with new ideas and welcoming change with excitement. We know that we must keep looking for fresh approaches to stay ahead. Whether it's adjusting to market changes or using new technologies, we're proactive about growing and succeeding in a fast-paced world. This adaptability is crucial in responding to the changing gas consumption patterns projected from 2024 to 2030.

Value no. 07 - Collaborative

We work together as a team towards common goals. We encourage open communication, collaboration, and supporting one another to maximize our strengths. By coordinating our efforts, we improve efficiency, productivity, and creativity, leading to success for our organization. This collaboration is key to managing complex projects like the LNG Terminal, which involves multiple stages and significant coordination.

OUR SERVICES

As an oil and gas company, we offer a comprehensive range of professional services aimed at meeting the diverse needs of our clients and partners.

Contains a brief Vision & Mission explanation of PT. Indo Sino Energi

PT Indo Sino Energi excels in discovering and extracting oil and gas, utilizing cutting-edge technologies for seismic surveys and drilling to identify subterranean reserves. The company is adept at crafting efficient extraction methods, ensuring the delivery of these vital resources to the market with an unwavering commitment to safety, environmental sustainability, and optimizing resource recovery.

The company's expertise extends to the construction and management of LNG receiving terminals, where it undertakes a comprehensive process from site selection and design to construction, commissioning, and operations. These terminals are pivotal in the importation and global distribution of natural gas, with Indo Sino placing high importance on operational safety, efficiency, and minimizing environmental impact.

In the realm of liquefied natural gas (LNG), Indo Sino is active in trading and champions the Mini LNG technology. This innovative approach facilitates LNG trade and encourages the adoption of Mini LNG setups designed for smaller-scale production and distribution, making LNG more accessible and promoting its wider use in various markets.

OUR SERVICES

As an oil and gas company, we offer a comprehensive range of professional services aimed at meeting the diverse needs of our clients and partners.

OUR SERVICES

Exploration & Development of oil & gas

We're experts in finding and extracting oil and gas. We use advanced technology to locate underground reservoirs through seismic surveys and drilling. Then, we design efficient methods to extract and deliver these resources to the market. Our priority is maximizing recovery while maintaining safety and environmental standards.

LNG receiving terminals construction & operations

We specialize in constructing and operating LNG receiving terminals. Our process includes site selection, design, construction, commissioning, and ongoing operations. We prioritize safety, efficiency, and environmental sustainability. Our terminals facilitate the import and distribution of natural gas worldwide.

LNG trading and Mini LNG technology & promotion

We engage in LNG trading and promote Mini LNG technology. We focus on facilitating the trade of liquefied natural gas while encouraging the adoption of Mini LNG technology, which enables the production and distribution of LNG on a smaller scale.



TEAM MANAGEMENT

The management team at PT. Indo Sino Energi (ISE) comprises seasoned professionals, each bringing a wealth of experience and unique skills to the company. Their collective expertise in business management, engineering, technical operations, and supply chain management has positioned ISE as a leader in Indonesia's oil and gas industry. Let's take a closer look at the key members of the team:

- **Engineering and Technical Experts**

The team also includes a group of highly skilled engineers and technical experts responsible for the operational excellence of ISE's projects. Their expertise covers geological studies, field development, production optimization, and environmental management.

Role: This collective group ensures that ISE's operations are efficient, safe, and environmentally responsible. They also drive innovation in exploration and production technologies to enhance ISE's competitive edge.

- **Supply Chain Specialists**

ISE's supply chain specialists play a critical role in managing the logistics and procurement processes, ensuring that operations are supported with the necessary materials and services efficiently and cost-effectively. Role: They are responsible for optimizing the supply chain, from vendor selection and contract management to logistics and inventory control, contributing to the operational efficiency and sustainability of the company.

The management team at PT. Indo Sino Energi is committed to leading the company with a focus on innovation, sustainability, and operational excellence. Their leadership ensures that ISE remains well-positioned to meet the energy sector's challenges and capitalize on opportunities for growth and development.

Our KPI's & Target in This Year



To establish comprehensive KPIs for PT Indo Sino Energi (ISE) in 2024 and set targets for the following year, it's essential to consider various aspects of the company's operations, including project development, financial performance, operational efficiency, and sustainability initiatives. Below is a structured KPI framework that aligns with ISE's strategic objectives, operational milestones, and long-term sustainability goals.

1. Project Development and Production

- Gas Production Volume: Start with a baseline of achieving the first gas by Q4 2024, with an initial production rate of 8.8 MMscfd from the Karamba Field, and aim to increase to 15 MMscfd by 2025 based on revised 2P reserves and SKK Migas approvals.
- Project Milestones Completion Rate: Track the progress against the development timeline for the Karamba Field and Mentawir E & P, aiming for 100% on-schedule completion of key milestones such as drilling, facility installation, and the start of gas production.

2. Financial Performance

- Revenue Growth: Target an increase in revenue by at least 20% in 2025, driven by the commencement of gas sales and optimized trading operations.
- Cost Efficiency: Achieve a reduction in operational and capital expenditure by 10% through improved supply chain management and operational efficiencies.
- Return on Investment (ROI): Aim for a positive ROI within the first year of production, with incremental growth in subsequent years.

3. Operational Excellence

- Operational Uptime: Maintain operational uptime of over 95% for all production facilities.
- Safety Incidents Rate: Zero lost-time incidents and a total recordable incident rate (TRIR) reduction of at least 20%.
- Well Productivity: Increase productivity by 10% through enhanced well completion and optimization techniques.

4. Sustainability and Community Engagement

- Environmental Compliance: Achieve 100% compliance with environmental regulations, with no significant environmental incidents.
- Community Development Programs: Implement at least five community development programs annually, focusing on education, healthcare, and economic development.
- Carbon Footprint Reduction: Develop and start implementing a plan to reduce carbon emissions by 10% within the next five years, focusing on energy efficiency and flaring reduction.

5. Innovation and Technology Adoption

- Technology Implementation: Introduce at least two new technologies or innovations in operations to enhance efficiency and reduce costs.
- Digital Transformation: Achieve 75% digitalization of operational and business processes by the end of 2025 to improve decision-making and operational efficiency.

6. Monitoring and Evaluation

- To ensure these KPIs are effectively met, ISE should establish a robust monitoring and evaluation system, incorporating regular reviews, performance dashboards, and stakeholder feedback mechanisms. This approach will allow agile adjustments to strategies and operations to meet or exceed the set targets.

OUR TAGLINE

PT. Indo Sino Energi leads the energy revolution with innovations in hydrogen technology, LNG, and renewable energy systems. Committed to sustainability, the company integrates environmental stewardship, economic growth, and social responsibility, fostering partnerships to accelerate the transition to a clean and renewable energy future.



Contains a brief history explanation of PT. Indo Sino Energi





OUR TAGLINE

OUR TAGLINE

LEADING THE PREMIER ENERGY REVOLUTION

PT. Indo Sino Energi stands at the forefront of the premier energy revolution, a beacon of innovation and technological prowess in the global quest for sustainability. In an era where the need for clean, renewable energy sources is more pressing than ever, the company is dedicated to pioneering solutions that promise not just to meet the current demands but to redefine them. With a steadfast commitment to innovation, PT. Indo Sino Energi is driving the transition toward a future where energy is abundant, sustainable, and accessible.

A relentless pursuit of technological excellence marks the company's journey by harnessing the latest advancements in hydrogen energy, LNG technology, and renewable energy systems, PT. Indo Sino Energi is crafting a portfolio of solutions at the energy sector's cutting edge. This commitment to innovation is not merely about staying ahead of the curve but pushing the boundaries of what's possible, transforming the energy landscape with groundbreaking developments like the Type IV hydrogen cylinder technology and Mini LNG plants.

At the heart of PT. Indo Sino Energi's mission is to recognize energy's critical role in shaping our world. The company's approach goes beyond producing clean energy; it encompasses a holistic vision of sustainability that integrates environmental stewardship, economic growth, and social responsibility. This vision is brought to life through strategic initiatives that prioritize reducing carbon footprints, promoting the use of sustainable resources, and supporting the communities where the company operates.

The drive towards a sustainable energy future is also a commitment to quality and excellence. PT. Indo Sino Energi's products and services are designed to comply with international standards and set new benchmarks for safety, efficiency, and reliability. This dedication to excellence is evident in every aspect of the company's operations, from developing cutting-edge energy solutions to implementing rigorous safety protocols and delivering unparalleled customer service.

Collaboration plays a crucial role in PT. Indo Sino Energi's strategy. Recognizing that sustainability challenges are too vast for any single entity to tackle alone, the company actively seeks partnerships with like-minded organizations, governments, and communities. Through these collaborations, PT. Indo Sino Energi leverages collective expertise and resources, driving innovation and accelerating the transition to a sustainable energy future.

As PT. Indo Sino Energi leads the premier energy revolution; its commitment to innovation, technological excellence, and sustainability serves as a model for the industry. The company's efforts are about providing energy solutions for today and shaping the energy landscape for future generations. In this endeavor, PT. Indo Sino Energi is not just a participant in the transition to a sustainable future; it is a leading force, paving the way for a world where clean, renewable energy powers our lives, economies, and planet.

VISION & MISSION

PT. Indo Sino Energi is committed to leading the way in clean energy solutions and eco-friendly technologies. With a mission of sustainable innovation, the company emphasizes sustainability, quality, and excellence. It focuses on growth, industry leadership, partnerships, and community development to make clean energy accessible.

📷 Contains a brief Vision & Mission explanation of PT. Indo Sino Energi.

INDOSINO
PT. Indo Sino Energi

OUR TEAM

At PT. Indo Sino Energi, our team is the heartbeat of innovation and sustainability. We are a dedicated and talented collective, each bringing their unique contribution to the table, yet united in one vision: to redefine the future of energy for a better world. With diverse backgrounds ranging from renewable energy engineers to sustainability strategists, we work together as colleagues and as a family, driven by a commitment to create innovative and sustainable solutions.

Our team is led by visionary leaders whose expertise is recognized across the industry. They are not just leaders but mentors, inspiring us every day to push the boundaries of what is possible. We believe every challenge is great to overcome through collaboration, integrity, and innovation. every

At PT. Indo Sino Energi is more than just an energy company; we are builders of the future. Each project we undertake is a step towards a greener and more sustainable world. We take pride in what we do and invite you to join us on this journey. Together, we can illuminate the world sustainably and responsibly.

PT. Indo Sino Energi

VISION & MISSION

PT. Indo Sino Energi is committed to leading the way in clean energy solutions and eco-friendly technologies. With a mission of sustainable innovation, the company emphasizes sustainability, quality, and excellence. It focuses on growth, industry leadership, partnerships, and community development to make clean energy accessible.

📷 Contains a brief Vision & Mission explanation of PT. Indo Sino Energi.

INDOSINO
PT. Indo Sino Energi

PT. Indo Sino Energi

INDOSINO
PT. Indo Sino Energi

VISION & MISSION

Vision

To become a global leader in providing clean energy solutions and innovative environmentally friendly technologies while ensuring the environment's and society's sustainability and success. We aim to realize a future where clean energy is accessible, supporting sustainable economic growth and the planet's well-being.

Mission

- Sustainable Innovation
- Commitment to Sustainability
- Excellence and Quality
- Growth and Expansion
- Industry Leadership
- Partnerships and Collaboration
- Community Development

Through this vision and mission, PT. Indo Sino Energi is committed to being more than just an energy company; we aspire to be agents of change that support the global transition towards a clean, sustainable, and inclusive energy future.



PT. Indo Sino Energi

Sustainable Innovation

Mission 1



Continuously develop and refine efficient and effective clean energy technologies and environmentally friendly solutions, including developing Type IV hydrogen cylinder technology and sustainable energy storage and distribution solutions.

- **Developing Clean Energy Technologies:** Prioritize research and development (R&D) in clean energy technologies, emphasizing Type IV hydrogen cylinder technology. That involves investing in R&D facilities, forming partnerships with academic and research institutions, and securing funding for innovation.
- **Sustainable Energy Storage and Distribution Solutions:** Explore and implement advanced materials and technologies for energy storage, such as solid-state batteries, flow batteries, and supercapacitors, to enhance efficiency and sustainability.

Commitment to Sustainability

Mission 2



Ensure all our operations and solutions prioritize environmental sustainability, reduce carbon footprint, and promote the use of sustainable resources.

- **Reducing Carbon Footprint:** Implement carbon footprint assessments across all operations to identify and mitigate emissions. That could involve transitioning to renewable energy sources, optimizing logistics and supply chains for efficiency, and adopting circular economy principles.
- **Sustainable Resource Use:** Develop a procurement policy that prioritizes materials and services from sustainable sources and encourages suppliers to adhere to sustainability standards.

Excellence and Quality

Mission 3



Provide high-quality products and services that meet and exceed our customers' expectations, focusing on reliability, safety, and technical excellence.

- **Quality Assurance Processes:** Establish robust quality assurance and control systems to ensure products and services meet stringent standards. Regular training for staff on the latest technologies and best practices is essential.
- **Safety and Technical Excellence:** Focus on developing products that are not only efficient but also safe for users and the environment. That includes adhering to international safety standards and conducting thorough risk assessments.

Growth and Expansion

Mission 4



Expand our market reach in the mining, energy, chemical equipment, and support tool sectors to increase our global market share and brand presence.

- **Market Analysis and Strategy:** Conduct comprehensive market analyses to identify growth opportunities in the mining, energy, and chemical equipment sectors. Develop targeted strategies for entering new markets or expanding existing ones, including localization strategies to meet specific market needs.
- **Brand Building:** Invest in marketing and brand development initiatives to build a strong, recognizable brand associated with sustainability and innovation.

Industry Leadership

Mission 5



Pioneer the adoption and promotion of clean energy and environmentally friendly technologies in Indonesia and Southeast Asia, setting an example in the industry for sustainable and ethical business practices.

- **Advocacy and Policy Engagement:** Engage with industry associations, policymakers, and regulatory bodies to advocate for supportive policies and standards for clean energy technologies.
- **Showcase Success Stories:** Highlight successful projects and case studies to demonstrate leadership and expertise in sustainable technologies.

Partnerships and Collaboration

Mission 6



Build partnerships with stakeholders, suppliers, customers, and communities to drive positive change and achieve shared sustainability goals collectively.

- **Strategic Alliances:** Identify and cultivate partnerships with technology providers, research institutions, and industry players to leverage collective innovation and market penetration strengths.
- **Community and Stakeholder Engagement:** Develop a stakeholder engagement plan to ensure transparent communication and collaboration with communities, customers, and suppliers.

Community Development

Mission 7




Please contribute to the economic and social development of the communities where we operate by supporting education, innovation, and sustainability initiatives.

- **Supporting Education and Innovation:** Invest in educational programs, scholarships, and innovation challenges to foster a new generation of sustainability and technology leaders.
- **Local Community Initiatives:** Launch initiatives that support regional economic and social development, such as vocational training programs, environmental conservation projects, and support for local businesses.


VISION & MISSION

The vision and mission of this company can only be effectively realized with genuine and committed cooperation from every existing aspect. It requires dedicated teamwork, a unified approach, and a concerted effort from all departments and individuals to ensure success and achieve our goals.

 Contains a brief Vision & Mission explanation of PT. Indo Sino Energi.

OUR BUSINESS

In 2024, PT. Indo Sino Energi ventured into the hydrogen energy sector, introducing Type IV hydrogen cylinder technology to Indonesia and Southeast Asia, enhancing safety and efficiency in hydrogen storage and distribution. Simultaneously, as a global leader in the tank container industry, we redefine standards with our innovative design, manufacturing, and service of high-quality containers for chemical and environmental material transport and storage.

 Contains a brief our business explanation of PT. Indo Sino Energi.

Our Business

Clean Energy ISE

At the outset of 2024, PT. Indo Sino Energi entered the hydrogen energy market with revolutionary strategic steps. We began our journey focusing on the development of Type IV hydrogen cylinder technology, the latest innovation that has proven effective in Europe. This move marks our commitment to bring leading technology to Indonesia and the Southeast Asia region and to pioneer the green energy industry in the area. With Type IV cylinder technology, we are introducing a safer and more efficient hydrogen storage method and opening new opportunities in the distribution and refueling of hydrogen.



Chemical and Environmental ISE

PT. Indo Sino Energi is a leading company in the global tank container industry with the most significant production scale, the most comprehensive product portfolio, and the broadest service network. As a pioneer in innovation and technology in this sector, we have set new standards in designing, manufacturing, and delivering high-quality tank containers. Focused on quality, reliability, and service excellence, we have won customers' trust worldwide and are recognized as a reliable partner in meeting the storage and transportation needs of chemicals and environmental materials.



Our Main Product

The ISO tanks, designed for easy transportation via road, rail, or sea, provide a flexible and reliable means of delivering LNG to end-users worldwide. With their modular design and scalable capacity, mini LNG plants and ISO tanks offer a sustainable and versatile solution to meet the growing demand for clean energy sources.

MINI LNG PLANT

Mini LNG Plant from PT. Indo Sino Energi This product is aimed at sectors requiring clean energy solutions that can be implemented locally and on a small to medium scale, offering high flexibility and operational efficiency.



Indo Sino Energi offers significant opportunities to accelerate the transition to cleaner and more sustainable energy sources, which aligns with the company's vision and mission to support a sustainable energy future.

ISO TANK

Iso Tank products from PT. Indo Sino Energi offers an efficient and safe storage and transportation solution for various liquids, including chemicals, gases, and other fluids requiring special handling. With a design that complies with international standards, Iso Tank provides flexibility, safety, and high efficiency in industrial liquid logistics.



By leveraging the advantages of Iso Tank, PT. Indo Sino Energi can strengthen its position as a reliable provider of industrial liquid logistics solutions, supporting customers' needs in various industrial sectors with safe, efficient, and environmentally friendly solutions.

PRODUCT & SERVICE

PT. Indo Sino Energi's Oilfield Equipment and Facilities Business Division offers comprehensive solutions for oilfield operations. Our LNG Skid Mounted Products provide efficient, portable, liquefied natural gas solutions catering to diverse industrial and energy needs.

Contains a brief product & service explanation of PT. Indo Sino Energi.

INDOSINO
PT. Indo Sino Energi



PT. Indo Sino Energi

Product & Service

PT. Indo Sino Energi is an entity operating in the energy sector, specializing in the development, production, and provision of sustainable and efficient energy solutions. This company focuses on innovation and the application of the latest technology to support the increasing global energy needs while also committing to environmentally friendly practices.





Oilfield Equipment and Facilities Business Division

Natural gas purification technology and equipment rental services.

Desulfurization and decarbonization technology of natural gas: design of desulfurization and decarbonization process by solution absorption method such as ethanolamine method, sulfone-amine method, solid adsorption method and membrane separation method, and manufacturing and operation services of integrated skid-mounted device.

Natural gas processing technology and equipment rental services.

NGL recovery and utilization technology: design of condensate recovery process such as oil absorption method, solid adsorption method, condensate separation method, and manufacturing and operation services of integrated skid-mounted device.

Production and utilization technologies of LNG, CNG, and helium extraction from natural gas: design of low-temperature liquefaction, helium extraction, and high-pressure compression process of natural gas, and manufacturing and operation services of the integrated skid-mounted device.

Low-efficiency oil and gas well surface stimulation technology and equipment rental services.

Low-efficiency gas well wellhead pressurization technology and equipment rental service: the compressor is used to pressurize the wellhead, which is suitable for increasing production of gas wells with declining production, especially for wells with declining efficiency.

Low-efficiency oil well high-pressure gas injection stimulation technology and equipment rental service: injecting high-pressure natural gas or carbon dioxide into the oil layer to improve the oil recovery rate of the oil field, which is suitable for increasing the production of oil wells with declining production.



Overview of LNG Skid Mounted Products

Different from the conventional pipeline liquefaction, the associated gas, wellhead gas, shale gas, coalbed methane, and tight gas in remote oil fields have the characteristics of small, scattered, remote, and unstable gas sources, so the traditional pipeline laying method is featured with high investment and high risk, which will lead to environmental pollution and waste of resources if recovery is not implemented; moreover, the sales coverage is small if CNG products are produced. Given the above situation, our company has developed a high-efficiency, low-cost, and movable small-scale natural gas liquefaction recovery equipment – MiniLNG complete set, which can conveniently recover small and scattered gas sources, improving energy utilization efficiency and facilitating installation and relocation.

- 1.Safe and reliable. All the equipment is designed and manufactured according to international and domestic standards.
- 2.Mature technology. Six sets of similar systems have been completed, thus a lot of successful manufacturing and operation experiences are accumulated, having received high reputations from users.
- 3.Advanced process. The self-developed advanced MRC (Mixed Refrigerant Cycle) process is used, which is characterized by low operating costs.
- 4.High quality. All the equipment is produced in batches in professional factory production lines, and the pressure test, purging, and inspection are carried out in the factory, ensuring quality and reducing production costs.
- 5.Good service. The turnkey project provides personalized design, manufacturing, installation, debugging, training, and lifelong technical services.
- 6.Complete function. The functions of natural gas purification, liquefaction, separation, storage, and transportation are provided.
- 7.Strong adaptability. The scale, type, and quantity of equipment can be combined and customized according to the actual gas source, environmental conditions, and customers' needs.
- 8.Strong flexibility. The whole set of equipment can be moved at any time.
- 9.The on-site construction period is short. There is little on-site construction, and there is no need for large concrete foundation.
10. Small area covered—high integration.

Technical advantages - Product Design

Licenses: A2 pressure vessel design and manufacturing license, the GB1, GC1 grade particular equipment installation, transformation and maintenance license, ASME license, U&U2 stamp. We can design and manufacture various pressure vessels, pipelines, and components.

R&D: Own the skid-mounted technology team of oil & gas ground equipment, with 41 patents, including 6 invention patents.

Skid manufacture strength: 20,000 km² workshop for equipment skids and vessel manufacturing. Large particular sandblasting room, Painting room, Heat treatment furnace; 13 large and medium-sized cranes with a maximum lifting capacity of 75 tons.

Testing facilities: With the particular welding flaw detection room, we can carry out UT (ultrasonic), RT (Ray), PT (penetration), and MT (magnetic powder) flaw detection with professional trial pressure testing facilities, self-made mobile FAT automatic test platforms, it can issue test reports accurately and quickly.

Quality and environment certificate: We have established a strict quality, environment, and occupational health and safety management system and have obtained the certificates of ISO9001:2015 and ISO14001:2015.



PERFORMANCES

S/N	Name of Contract Client	Project Name	Construction Site	Construction Scale
1	Shaanxi Ganquan Gas Co., Ltd.	Shaanxi Ganquan 100,000m ³ LNG Project	Ganquan, Shaanxi	100,000m ³ /day
2	Shihezi, Xinjiang	Xinjiang Shihezi LNG Project	Shihezi, Xinjiang	100,000m ³ /day
3	Xinjiang Kailong Energy Co., Ltd.	Xinjiang Kailong Energy (Jinqian No. 3 Well) LNG Project	Suining, Sichuan	100,000m ³ /day
4	Xinjiang Kailong Energy Co., Ltd.	Xinjiang Kailong Energy (Jinqian No. 5 Well) LNG Project	Suining, Sichuan	100,000m ³ /day
5	Xinjiang Tianfu Tianyuan Gas Co., Ltd.	Xinjiang Tianfu Tianyuan Gas LNG Project	Shihezi, Xinjiang	100,000m ³ /day
6	Shaanxi Yuxingrong Chemical Co., Ltd.	Shaanxi Yuxingrong Chemical LNG Project	Yulin, Shaanxi	50,000m ³ /day
7	Shaanxi Zhaoran Gas Co., Ltd.	Shaanxi Zhaoran Gas LNG Project	Yulin, Shaanxi	50,000m ³ /day
8	Environmental Protection Section of Xinjiang Kailong	LNG Project of Environmental Protection Section of Xinjiang Kailong	Karamay City, Xinjiang	50,000m ³ /day
9	PetroChina	Shanxi Coalbed Gas LNG Project	Linxian County, Shanxi Province	50,000m ³ /day
10	Karamay Fucheng Energy Co., Ltd.	Karamay Fucheng Energy Co., Ltd. LNG Project	LNG Project	150,000m ³ /day
11	Sichuan Ya'an Zhonghong Gas Co., Ltd.	Ya'an Lushan Storage Peak Regulation Project	Ya'an, Sichuan	200,000m ³ /day
12	Pakistan	Port Qasim LNG Receiving Terminal	Pakistan	200,000m ³ /day

SHAANXI GANQUAN 100,000M³ LNG PROJECT

The project was invested in and constructed by Ganquan Fengyuan Natural Gas Company and operated by Jiruixiang. It is located in Ganquan, Shaanxi Province. The pre-treatment of the project is 100,000m³/day, the liquefaction is 100,000m³/day, and the storage tank is a 100m³ pressurized storage tank. The central process units include a feed gas pressurization and decarbonization unit, dehydration unit, mercury and heavy hydrocarbon removal unit, liquefaction unit, refrigerant storage, LNG storage tank, and loading facility.



XINJIANG SHIHEZI LNG PROJECT

The project is located in Shihezi, Xinjiang. Processing capacity: 100,000m³/day, skid-mounted device. Energy consumption: ~0.45 kW/Nm³



LNG PROJECT OF XINJIANG KAILONG ENERGY

Xinjiang Kailong Energy (Jinqian No. 3 Well) LNG Project is located in Suining City, Sichuan Province, with a processing capacity of 100,000m³/day and skid-mounted units. ~0.45 kW/ Nm³



LNG PROJECT OF XINJIANG KAILONG ENERGY

Xinjiang Kailong Energy (Jinqian No. 5 Well) the LNG Project is located in Suining City, Sichuan Province, with a processing capacity of 100,000m³/day and skid mounted units. ~0.43 kW/ Nm³




YA'AN LUSHAN STORAGE PEAK REGULATION PROJECT

The project was invested in and constructed by Zhonghong Gas in Lushan County, Ya'an City, and is located in Lushan, Ya'an City. The pre-treatment of the project is 100,000m³/day, the liquefaction is 100,000m³/day, and the storage tank is a 2,000m³ single-volume tank. The central process units include a feed gas pressurization and decarbonization unit, dehydration unit, mercury and heavy hydrocarbon removal unit, liquefaction unit, refrigerant storage, flash gas booster, LNG storage tank, and loading facility.



COMPANY VALUES AND PHILOSOPHY

Company Philosophy: "Innovating for a Sustainable Future." We're committed to continuously innovating to create solutions supporting sustainable growth for our company and the environment.

 Contains a brief company values & philosophy explanation of PT. Indo Sino Energi.



COMPANY VALUES AND PHILOSOPHY

Company Philosophy: "Innovating for a Sustainable Future" Our philosophy reflects our commitment to continually innovate in creating solutions that support sustainable growth, both for our company and for the environment in which we operate. By continuously pushing the boundaries of innovation, we can create a better and more sustainable future for all stakeholders involved.

Value 1

Superior Quality PT. Indo Sino Energi implements strict quality standards in every phase of production and service. That includes the use of high-quality raw materials, the application of advanced manufacturing processes, and thorough quality inspections of products before distribution. In customer service, the company provides comprehensive training for its customer service team to ensure a quick and effective response to any customer needs or issues.

Value 2

Sustainable Innovation PT. Indo Sino Energi invests significantly in research and development to produce innovations in clean energy technology and operational efficiency. The company also fosters a culture of innovation among its employees through incentive programs for ideas that can enhance products or processes. Collaboration with research institutions and technology startups is part of the strategy to maintain a constant flow of innovation.

COMPANY VALUES AND PHILOSOPHY

Value 3

Commitment to Safety To ensure work and product safety, PT. Indo Sino Energi implements strict safety standards and conducts regular employee safety training programs. Routine safety audits and risk assessments are carried out to identify and mitigate potential company operations hazards.

Value 4

Integrity and Business Ethics The company enforces a clear code of ethics and compliance procedures to ensure all business activities are conducted with integrity and transparency. PT. Indo Sino Energi also encourages a secure reporting system for employees or external parties who wish to report unethical practices or violations without fear of retribution.

Value 5

Environmental Sustainability Its commitment to environmental sustainability is reflected in waste reduction initiatives, using renewable energy, and improving energy efficiency in operations. PT. Indo Sino Energi also participates in reforestation and conservation programs to support environmental sustainability around its operational areas. These steps help reduce environmental impact and strengthen the company's reputation as a leader in sustainable business practices.

COMPETITIVE ADVANTAGE

PT. Indo Sino Energi's superiority over other companies in the same field lies in several distinctive strategic and operational aspects. Here are the points that differentiate PT. Indo Sino Energi from its competitors

Contains a brief competitive advantage explanation of PT. Indo Sino Energi.

Competitive Advantage

1

Innovative Type IV Hydrogen Cylinder Technology: PT. Indo Sino Energi is one of the pioneers in developing and applying Type IV hydrogen cylinder technology in Indonesia and Southeast Asia. This technology offers a safer and more efficient storage method than older hydrogen cylinder technologies, marking a breakthrough in hydrogen energy storage and distribution.

2

Focus on Clean Energy and Sustainability: Unlike many competitors who still rely on conventional energy sources, PT. Indo Sino Energi explicitly focuses on clean energy and environmentally friendly solutions. This commitment is reflected not only in the products and services offered but also in the company's internal operations and corporate sustainability initiatives.

3

Vast and Strategic Distribution Network: With a vast and strategic distribution network, PT. Indo Sino Energi can reach various industrial sectors, including transportation, manufacturing, and energy, throughout Indonesia and Southeast Asian countries. That allows the company to provide solutions that can be customized to client needs, offering a significant competitive advantage.

Competitive Advantage

4

Comprehensive Product and Service Portfolio: PT. Indo Sino Energi offers the most complete portfolio of tank container and clean energy solutions in the industry. From advanced storage technology to innovative distribution solutions, the company provides end-to-end solutions that meet a variety of customer needs.

5

Commitment to R&D and Innovation: Ongoing investment in research and development (R&D) ensures that PT. Indo Sino Energi remains at the forefront of innovation in the clean energy industry and environmentally friendly technologies. That includes the development of new products and the enhancement of existing products to maintain a competitive edge.

6

Reliability and Service Excellence: PT. Indo Sino Energi has a reputation for reliability and service excellence, and an experienced and competent team supports it. A commitment to customer satisfaction and strong after-sales support differentiates the company from its competitors.

Competitive Advantage


7

Leadership in Sustainability and Social Responsibility: PT. Indo Sino Energi focuses not only on profit but also on making a positive contribution to the environment and community. Sustainability initiatives and corporate social responsibility efforts strengthen the company's image as a leader in ethical and sustainable business practices.

Through these advantages, PT. Indo Sino Energi has successfully positioned itself as a leader in the clean energy and environmentally friendly technology market, not only as a service and product provider but also as an agent of change towards a more sustainable future.

KEY PERFORMANCE INDEX

Based on the comprehensive overview of PT. Indo Sino Energi (ISE) provided in the company profile, the development of Key Performance Indicators (KPIs) should reflect the company's strategic goals, operational efficiency, sustainability initiatives, innovation, and market expansion. Here's a breakdown of potential KPIs across different areas of the company's operations:

 Contains a brief key performance indicator explanation of PT. Indo Sino Energi.

KEY PERFORMANCE INDICATOR

Strategic and Market Expansion KPIs

Market Share Growth

1. **Baseline Measurement:** Establish the current market share in each targeted sector.
2. **Annual Goals:** Set specific percentage growth targets for each sector.
3. **Competitive Analysis:** Regularly analyze competitor market shares and adjust strategies accordingly.
4. **Market Penetration Strategies:** Develop and implement plans to enter new markets or segments.

Brand Recognition

1. **Survey Development:** Design surveys to measure brand awareness and perception among target audiences.
2. **Benchmarking:** Compare brand recognition levels against main competitors.
3. **Marketing and PR Campaigns:** Execute campaigns aimed at increasing visibility and improving brand image.
4. **Measurement Frequency:** Conduct these surveys bi-annually or annually to track progress.

Customer Acquisition

1. **Target Setting:** Define specific targets for new clients or contracts to be acquired within the year.
2. **Lead Generation Strategies:** Implement strategies for generating leads, such as digital marketing, partnerships, and networking events.
3. **Conversion Rate Optimization:** Monitor and optimize the conversion rate from leads to clients.
4. **Retention Strategies:** Develop onboarding and retention programs to turn new clients into loyal customers.



Operational Efficiency and Sustainability KPIs

Operational Cost Reduction

- 1. Baseline Costs Identification:** First, quantify current operational costs across different departments or operations.
- 2. Efficiency Improvement Plans:** Implement plans targeting specific areas for cost reduction, such as energy efficiency, process automation, or supply chain optimization.
- 3. Measurement Metric:** Calculate the percentage reduction in operational costs compared to a set baseline year.
- 4. Continuous Improvement:** Adopt a continuous improvement framework like Lean or Six Sigma to sustain cost reduction efforts.

Carbon Footprint Reduction

- 1. Current Carbon Footprint Assessment:** Conduct a comprehensive audit to measure the company's current carbon emissions.
- 2. Reduction Targets:** Set clear, measurable targets for carbon footprint reduction on an annual basis.
- 3. Implementation Strategies:** Strategies may include increasing energy efficiency, transitioning to renewable energy sources, and enhancing waste management practices.
- 4. Tracking and Reporting:** Use carbon accounting tools to track emissions reduction and report progress in sustainability reports or through recognized frameworks like the Global Reporting Initiative (GRI).

Renewable Energy Usage

- 1. Baseline Renewable Energy Use:** Determine the percentage of renewable energy currently utilized in total energy consumption.
- 2. Renewable Energy Goals:** Establish ambitious yet achievable goals for increasing the use of renewable energy sources over time.
- 3. Investment in Renewables:** Invest in renewable energy projects, purchase green energy certificates, or engage in power purchase agreements (PPAs) to meet these goals.
- 4. Monitoring System:** Implement a system to regularly monitor the percentage of energy consumed from renewable sources.



Operational Efficiency and Sustainability KPIs

Waste Reduction

- 1. Waste Audit:** Conduct an audit to identify the types and amounts of waste generated by operations.
- 2. Reduction Targets:** Set specific targets for waste reduction, focusing on areas with the highest waste production.
- 3. Reduction Strategies:** Implement strategies such as recycling programs, materials optimization, and waste-to-energy projects.
- 4. Progress Measurement:** Measure the percentage reduction in waste generated, comparing current data to baseline levels.

Innovation and Product Development KPIs

R&D Investment

- 1. Percentage Calculation:** Annually calculate the total investment in research and development (R&D) as a percentage of the company's total revenue. This helps gauge the company's commitment to innovation relative to its size and industry standards.
- 2. Benchmarking:** Compare this percentage against industry averages or key competitors to ensure competitiveness.
- 3. Strategic Allocation:** Ensure that R&D investments are aligned with strategic innovation areas that offer the highest potential for growth and market differentiation.
- 4. Outcome Evaluation:** Track the efficiency of R&D spending by evaluating the outcomes of research initiatives in terms of patents obtained, products developed, and resultant revenue streams.



Innovation and Product Development KPIs

New Product Introductions

- 1. Product Launch Tracking:** Monitor the number of new products or technologies developed and successfully launched in the market within a specific timeframe, typically annually.
- 2. Market Impact Assessment:** Evaluate the market acceptance and performance of these new introductions in terms of sales, market share, and customer feedback.
- 3. Development Cycle Time:** Measure the average time taken from concept to market launch to assess the efficiency of the product development process.
- 4. Innovation Diversification:** Ensure a balanced portfolio of new products catering to different markets or solving various problems, to spread risk and capitalize on multiple opportunities.

Patents Filed

- 1. Patent Count:** Keep a count of the number of patents filed (and granted) as a direct measure of innovation output.
- 2. Innovation Quality:** Assess the potential commercial impact of these patents, considering factors like market applicability, technological advancement, and potential for creating competitive advantage.
- 3. R&D Collaboration:** Monitor the extent of collaboration involved in innovation, such as partnerships with universities, research institutions, or other companies, which can enhance the quality and scope of patents filed.
- 4. Intellectual Property Strategy:** Develop a comprehensive intellectual property (IP) strategy that not only focuses on the number of patents but also on protecting key technologies that will drive future growth and provide a competitive edge.



Customer Satisfaction and Service Excellence KPIs

Customer Satisfaction Score (CSAT)

- 1. Survey Implementation:** Deploy surveys that ask customers to rate their satisfaction with the product or service on a defined scale, typically after a purchase or a service interaction. This could be a scale of 1 to 5 or 1 to 10.
- 2. Frequency and Timing:** Determine the optimal frequency and timing for sending these surveys to maximize response rates while minimizing customer inconvenience.
- 3. Analysis and Action:** Analyze the scores to identify trends, areas for improvement, and opportunities to enhance customer satisfaction. Implement action plans based on this analysis.
- 4. Benchmarking:** Set benchmarks for CSAT scores based on historical data, industry standards, or competitor analysis to evaluate performance.

Net Promoter Score (NPS)

- 1. Survey Question:** Utilize the standard NPS survey question asking customers how likely they are to recommend the company or product to others, on a scale of 0 to 10.
- 2. Segmentation:** Break down NPS scores by customer segments, product lines, or service areas to identify areas with the highest and lowest levels of customer loyalty.
- 3. Follow-Up:** For respondents giving low scores (detractors), implement a follow-up process to understand their concerns and address them.
- 4. Goal Setting:** Establish clear targets for improving NPS over time and integrate these goals into broader customer experience improvement strategies.

Customer Satisfaction and Service Excellence KPIs

After-Sales Support Response Time

- 1. Measurement Metrics:** Measure the average time taken from when a customer support request or ticket is submitted to when the first response is given, and separately measure the time to resolution.
- 2. Service Level Agreements (SLAs):** Establish SLAs for response and resolution times based on the complexity of support requests and industry benchmarks.
- 3. Continuous Monitoring:** Use customer support software to monitor response times in real-time and generate reports for ongoing analysis.
- 4. Improvement Plans:** Identify bottlenecks in the support process and implement improvements. This could include training for support staff, enhancing knowledge bases, or adopting more efficient customer service technologies.

Social Responsibility and Community Development KPIs

CSR Projects Initiated

- 1. Project Tracking:** Implement a system to track the number of Corporate Social Responsibility (CSR) projects initiated each year. This includes projects focused on environmental sustainability, community welfare, and social initiatives.
- 2. Project Impact:** Alongside tracking the number of projects, evaluate the impact of these initiatives on the community and the environment. Use both quantitative and qualitative measures to assess outcomes.
- 3. Stakeholder Engagement:** Engage with stakeholders, including community leaders, local governments, and NGOs, in the planning and execution of CSR projects to ensure they are well-aligned with community needs.
- 4. Reporting:** Regularly report on CSR activities and their impacts, both internally to engage employees and externally to showcase the company's commitment to social responsibility.

Social Responsibility and Community Development KPIs

Community Engagement Score

- 1. Feedback Mechanism:** Develop a feedback mechanism to gather input from the community on the company's engagement and development programs. That could include surveys, focus groups, and community meetings.
- 2. Impact Assessment:** Conduct impact assessments to evaluate the effectiveness of community engagement programs. Assessments should consider the immediate benefits and the long-term sustainability of these initiatives.
- 3. Score Calculation:** Create a scoring system based on feedback and impact assessments to measure the effectiveness of community engagement efforts quantitatively. That could factor in aspects such as community satisfaction, initiatives' relevance, and community participation.
- 4. Improvement Plan:** Use the insights gained from the community engagement score to identify improvement areas and plan future initiatives that are more closely aligned with community needs and expectations.

Education and Training Programs

- 1. Beneficiary Tracking:** Keep a detailed record of the number of individuals benefiting from company-sponsored education or training programs. That includes tracking participation in workshops, seminars, and courses to enhance skills and knowledge.
- 2. Program Evaluation:** Evaluate the effectiveness of these programs in terms of participant satisfaction, knowledge gain, and the application of new skills in practical settings.
- 3. Partnerships:** Establish partnerships with educational institutions, vocational training centres, and professional organizations to expand the reach and impact of education and training programs.
- 4. Long-term Outcomes:** Monitor the long-term outcomes for participants, such as improvements in employability, career advancement, and contributions to community development. That helps understand the broader impact of the company's investment in education and training.

SUSTAINABILITY

Indo Sino Energi prioritizes sustainability through innovative energy solutions, environmental stewardship, economic responsibility, social equity, and safety. Transparent governance ensures ethical practices. It drives clean energy adoption, local capacity building, strategic partnerships, and community development in Indonesia, aiming for sustainable progress and energy independence.

Contains a brief product & service explanation of PT. Indo Sino Energi.

SUSTAINABILITY

AT INDO SINO ENERGI

WHAT SUSTAINABILITY MEANS AT INDO SINO ENERGI

AtPT Indo Sino Energi, sustainability is a comprehensive ethos that permeates every aspect of the company's operations, strategies, and future vision. It's not just a policy or a set of guidelines; it's a foundational principle that guides the company's approach to business, innovation, and community engagement. Here's what sustainability means for us :

• INNOVATION FOR A GREENER FUTURE

At the core ofPT Indo Sino Energi's mission is the commitment to developing and deploying innovative energy solutions that minimize environmental impact. That involves significant investment in research and development (R&D) to pioneer technologies like the Type IV hydrogen cylinder and Mini LNG plants, which offer cleaner alternatives to traditional energy sources. By focusing on breakthroughs that can lead to more efficient use of resources and reduced emissions, the company actively contributes to a sustainable energy landscape.

• ENVIRONMENTAL STEWARDSHIP

Indo Sino Energi adopts a holistic view of environmental sustainability, encompassing everything from reducing carbon footprints and enhancing energy efficiency to responsible waste management and conservation practices. The company's operations are designed to protect the environment, preserve natural resources, and promote biodiversity. This commitment extends beyond compliance with environmental regulations to proactive initiatives that contribute to global efforts against climate change.



SUSTAINABILITY

AT INDO SINO ENERGI

- **ECONOMIC RESPONSIBILITY**

Understanding that true sustainability also means economic viability, PT Indo Sino Energi strives to balance financial growth with environmental and social responsibilities. The company seeks to demonstrate that sustainable business practices can drive profitability and innovation, encouraging a shift in the broader industry towards greener solutions that also offer economic benefits.

- **SOCIAL EQUITY AND COMMUNITY ENGAGEMENT**

Sustainability at PT Indo Sino Energi encompasses a commitment to social responsibility, aiming to impact the communities where the company operates positively. That includes initiatives to support local development, improve access to clean energy, and engage in partnerships that promote education, health, and well-being. The company believes in creating value that benefits society, fostering an inclusive approach that supports equitable growth and development.

- **OPERATIONAL EXCELLENCE AND SAFETY**

The company prioritizes operational practices, ensuring the safety and well-being of its employees, customers, and communities. That includes implementing rigorous safety standards, conducting regular training and audits, and adopting sustainable operational practices that minimize risks to people, the environment, and the communities it serves. That includes implementing rigorous safety standards, conducting regular training and audits, and adopting sustainable operational practices that minimize risks to people and the environment.



SUSTAINABILITY

AT INDO SINO ENERGI

- **TRANSPARENT AND ETHICAL GOVERNANCE**

Indo Sino Energi is committed to high transparency, integrity, and ethical behaviour standards. This commitment is reflected in its governance practices, which ensure accountability, fair dealing, and respect for all stakeholders. The company's dedication to anti-corruption, transparency in its supply chain, and ethical business practices is integral to its sustainability ethos.

In summary, sustainability at PT Indo Sino Energi is a multifaceted commitment that integrates environmental protection, social responsibility, economic health, and ethical governance. By embedding these principles into every aspect of its business, PT Indo Sino Energi aims to be a leader in clean energy solutions and set a standard for responsible and sustainable business practices in the global energy sector.

VIEWS ON THE ENVIRONMENT BY INDO SINO ENERGI

Indo Sino Energi's comprehensive and proactive view of the environment reflects the company's deep commitment to sustainability and social responsibility. This perspective is founded on several fundamental principles guiding all of the company's activities and initiatives:

- **ECOLOGICAL BALANCE AS A PRIORITY**

Indo Sino Energi views the environment as a precious asset that must be protected and preserved for current and future generations. The company strives to operate its business in ways that support ecological balance through carbon emission reduction, efficient energy use, and responsible natural resource utilization.



SUSTAINABILITY

AT INDO SINO ENERGI

• CARBON FOOTPRINT REDUCTION

Indo Sino Energi is committed to minimizing its environmental impact by reducing its carbon footprint. It is achieved through innovations in clean energy technology, such as the development of Type IV hydrogen cylinder technology and Mini LNG plants, aiming to replace more polluting fossil fuel sources with cleaner, more sustainable alternatives.

• APPROACH TO CIRCULAR ECONOMY

Indo Sino Energi's view of the environment includes promoting a circular economy, where reuse, recycling, and resource recovery are essential. The company aims to reduce waste, increase resource efficiency, and create value from products and materials previously considered waste through this approach.

• EMPOWERING COMMUNITIES

Indo Sino Energi believes that environmental protection and sustainable development can only be achieved through the active participation of all stakeholders, including local communities. Therefore, the company endeavours to involve communities in conservation and environmental education activities, support projects that provide direct environmental benefits, and help raise awareness of the importance of ecological preservation.

• COMPLIANCE AND ENVIRONMENTAL INITIATIVES

Indo Sino Energi is committed to meeting and exceeding applicable environmental standards and regulations. This is reflected in the company's investment in clean technologies, sustainable operational practices, and initiatives designed to protect and enhance the natural environment.



SUSTAINABILITY

AT INDO SINO ENERGI

• GLOBAL COOPERATION AND PARTNERSHIPS

: Facing global environmental challenges, PT Indo Sino Energi recognizes the importance of cross-border cooperation and partnerships with other organizations, including governments, businesses, and NGOs. Through these collaborations, the company aims to contribute to global solutions for environmental issues like climate change and biodiversity loss.

Overall, PT Indo Sino Energi's view of the environment is a reflection of its commitment to sustainable development and corporate responsibility. Through a holistic approach integrating environmental, economic, and social aspects, PT Indo Sino Energi strives to be a leader in the global transition towards a sustainable and environmentally friendly energy future.

• VIEWS ON THE ENVIRONMENT BY INDO SINO ENERGI

At PT Indo Sino Energi, safety is paramount and considered an integral part of the company's core values and operational philosophy. This unwavering commitment to safety is reflected in several critical aspects of the company's approach:

• SAFETY AS A CULTURE

Indo Sino Energi fosters a safety-first culture that permeates all levels of the organization. This culture is based on the belief that every accident is preventable and safety is not just a protocol but a way of life. Employees are encouraged to prioritize safety above all else, ensuring their well-being and that of their colleagues, clients, and the communities in which the company operates.



SUSTAINABILITY

AT INDO SINO ENERGI

• COMPREHENSIVE SAFETY TRAINING

Recognizing that well-informed employees are the cornerstone of a safe workplace, PT Indo Sino Energi invests heavily in comprehensive safety training programs. These programs cover a broad spectrum of topics, from correctly operating equipment and handling hazardous materials to emergency response procedures and health and wellness education. Continuous learning and improvement are emphasized to keep pace with new safety challenges and technologies.

• PROACTIVE RISK MANAGEMENT

The company employs a proactive approach to risk management, systematically identifying, assessing, and mitigating risks in its operations. That involves regular safety audits, workplace inspections, and the implementation of rigorous safety standards designed to prevent accidents and incidents before they occur.

• INNOVATION IN SAFETY TECHNOLOGIES

Indo Sino Energi is committed to leveraging technology to enhance safety. This includes the adoption of advanced safety management systems, real-time monitoring tools, and innovative protective equipment. The company continually explores new technologies and practices that can further reduce risks and improve safety outcomes.

• STAKEHOLDER ENGAGEMENT

Safety is considered a shared responsibility at PT Indo Sino Energi, involving employees, contractors, clients, and the broader community. The company actively engages with all stakeholders to promote safety awareness, share best practices, and collaborate on safety initiatives. This inclusive approach ensures that safety considerations are integrated into every aspect of the company's operations and external interactions.



SUSTAINABILITY

AT INDO SINO ENERGI

• CONTINUOUS IMPROVEMENT

The pursuit of safety excellence at PT Indo Sino Energi is an ongoing journey. The company regularly reviews and updates its safety policies, practices, and performance metrics to reflect lessons learned, regulatory changes, and advancements in safety science. Feedback from employees and other stakeholders is valued as a critical input for continuous improvement.

In summary, PT Indo Sino Energi's view on safety is holistic, proactive, and deeply ingrained in the company's culture and operations. By prioritizing safety in every decision and action, the company not only protects its workforce and assets but also builds trust and credibility with clients, partners, and the communities it serves, reinforcing its commitment to being a responsible and sustainable energy provider.

VIEW ON TRANSPARENCY IN INDO SINO ENERGI

At PT Indo Sino Energi, transparency is regarded as a cornerstone of trust and integrity, essential for fostering strong relationships with stakeholders and maintaining a reputable and sustainable business. The company's perspective on transparency is manifested through several core principles

• OPEN COMMUNICATION

Indo Sino Energi is committed to open, honest, and timely communication with all stakeholders, including employees, customers, partners, investors, and the communities where it operates. This approach ensures that relevant information about the company's operations, financial performance, and sustainability initiatives is accessible and understandable, facilitating informed decision-making and engagement.



SUSTAINABILITY

AT INDO SINO ENERGI

- **ETHICAL REPORTING**

The company adheres to high standards of accuracy and integrity in its reporting practices. Financial reports, sustainability updates, and other public disclosures are prepared with meticulous attention to detail and in compliance with applicable laws and industry standards. PT Indo Sino Energi seeks to provide a clear and comprehensive view of its activities, achievements, and challenges.

- **STAKEHOLDER ENGAGEMENT**

Recognizing the value of stakeholder insights in shaping its business strategy and practices, PT Indo Sino Energi actively engages with a diverse range of stakeholders. Through regular meetings, surveys, and feedback mechanisms, the company solicits input on its operations and policies. This inclusive approach not only enhances transparency but also enables the company to better address stakeholder concerns and expectations.

- **GOVERNANCE AND COMPLIANCE**

Transparency is integral to PT Indo Sino Energi's governance and compliance framework. The company implements rigorous governance structures and practices that promote ethical behavior, accountability, and responsible decision-making. Compliance with legal and regulatory requirements is treated as a minimum standard, with the company often striving to exceed these expectations through proactive transparency and ethics initiatives.



SUSTAINABILITY

AT INDO SINO ENERGI

- **SUSTAINABILITY REPORTING**

Indo Sino Energi is dedicated to transparently reporting its environmental, social, and governance (ESG) performance. The company publishes detailed sustainability reports that provide stakeholders with a clear picture of its impact on the environment, society, and the economy. These reports follow recognized reporting frameworks and standards, ensuring that the company's sustainability efforts are measurable, comparable, and verifiable.

- **COLLABORATION AND PARTNERSHIPS**

In its pursuit of transparency, PT Indo Sino Energi collaborates with industry peers, non-governmental organizations (NGOs), and other external parties to share best practices and learn from others. The company believes that transparency is not just an internal policy but a collective endeavor that can drive industry-wide improvements in sustainability and corporate responsibility.

Indo Sino Energi's commitment to transparency reflects its understanding that trust and credibility are not just given but earned through consistent, open, and ethical behavior. By embedding transparency into its culture and operations, the company not only aligns with best practices in corporate governance and sustainability but also builds a foundation for long-term success and positive stakeholder relationships.



PT Indo Sino Energi Untuk Indonesia

"Indo Sino Energi untuk Indonesia" merefleksikan visi dan misi perusahaan dalam berkontribusi signifikan terhadap pembangunan berkelanjutan, kemandirian energi, dan peningkatan kualitas hidup masyarakat Indonesia. Melalui inovasi, kolaborasi, dan komitmen terhadap keberlanjutan, PT Indo Sino Energi berupaya menjadi pemain kunci dalam transformasi sektor energi di Indonesia. Berikut ini adalah penjelasan lebih lanjut mengenai peranan dan kontribusi PT Indo Sino Energi untuk Indonesia:

• PENDORONG ENERGI BERSIH

Dengan fokus pada pengembangan dan penerapan solusi energi bersih, PT Indo Sino Energi berambisi mendukung Indonesia dalam transisi energinya. Inisiatif seperti pengembangan teknologi tabung hidrogen Tipe IV dan pabrik LNG Mini menawarkan alternatif energi yang lebih bersih, efisien, dan berkelanjutan, yang selaras dengan tujuan nasional untuk mengurangi ketergantungan pada bahan bakar fosil dan menurunkan emisi karbon.

• INOVASI DAN TEKNOLOGI

Indo Sino Energi berinvestasi dalam penelitian dan pengembangan untuk membawa inovasi teknologi energi terdepan ke Indonesia. Dengan memanfaatkan kemajuan teknologi, perusahaan ini berupaya meningkatkan efisiensi energi, mengurangi biaya operasional, dan memperluas akses terhadap energi bersih bagi masyarakat dan industri di seluruh negeri.

• PENINGKATAN KAPASITAS LOKAL

Melalui program pelatihan dan pengembangan, PT Indo Sino Energi berkomitmen untuk meningkatkan kapasitas dan keterampilan tenaga kerja lokal. Perusahaan ini berusaha menciptakan lapangan kerja yang berkualitas dan mendukung pertumbuhan ekonomi berkelanjutan melalui transfer pengetahuan dan teknologi.

• KERJA SAMA STRATEGIS

Indo Sino Energi menggandeng berbagai pihak, termasuk pemerintah, industri, dan komunitas lokal, dalam membangun ekosistem energi bersih di Indonesia. Kerja sama ini mencakup pengembangan infrastruktur, penyediaan solusi energi terpadu, dan implementasi proyek-proyek energi bersih yang dapat memberi manfaat langsung kepada masyarakat.

• KONTRIBUSI TERHADAP PEMBANGUNAN BERKELANJUTAN

Dengan mengedepankan praktik operasional yang berkelanjutan dan bertanggung jawab, PT Indo Sino Energi berkontribusi terhadap upaya pelestarian lingkungan dan pembangunan ekonomi sosial di Indonesia. Inisiatif seperti pengelolaan limbah yang bertanggung jawab, reforestasi, dan dukungan terhadap program-program komunitas menunjukkan komitmen perusahaan terhadap keberlanjutan lingkungan dan sosial.

• PENGEMBANGAN KOMUNITAS DAN CSR

Indo Sino Energi memandang pentingnya pengembangan komunitas dan melaksanakan berbagai program tanggung jawab sosial perusahaan (CSR) yang bertujuan untuk meningkatkan kesejahteraan masyarakat. Program-program ini mencakup pendidikan, kesehatan, pembangunan infrastruktur, dan dukungan terhadap kegiatan ekonomi mikro dan kecil.

Melalui komitmen dan inisiatif-inisiatif tersebut, PT Indo Sino Energi berharap dapat memberikan dampak positif dan berarti bagi pembangunan Indonesia, khususnya dalam mencapai kemandirian energi, pembangunan berkelanjutan, dan peningkatan kualitas hidup masyarakat. "Indo Sino Energi untuk Indonesia" merupakan wujud nyata dari dedikasi perusahaan untuk berkontribusi secara aktif dalam mewujudkan masa depan yang lebih cerah dan berkelanjutan bagi Indonesia.

■ Full-scale Development of Wain Block

In 2024, PT. Indo Sino Energi has set a significant milestone with the full-scale development of the Wain Block.

This initiative represents a major advancement in the company's growth and strategic positioning in the energy sector. Here are the key aspects of this milestone:



■ key aspects

01

Project Commencement: 2024 marks the start of full-scale development activities in the Wain Block, located in East Kalimantan, Indonesia. This project directly results from the operatorship approval granted in 2023, allowing PT. Indo Sino Energi to take charge of extensive exploration and production operations.

02

Investment and Infrastructure: A substantial investment has been allocated to the Wain Block to establish the necessary infrastructure, including drilling rigs, pipelines, and processing facilities. This setup supports the optimal extraction and processing of oil and gas resources.

03

Technology Integration: The company aims to enhance operational efficiency and environmental sustainability by leveraging advanced technology and innovative practices. This includes using cutting-edge exploration techniques, efficient resource management systems, and environmentally friendly production methods.

OUR MAILSTONE

In 2024, PT. Indo Sino Energi is focusing on operational excellence, expanding its portfolio, and driving technology and innovation. Key initiatives include full-scale development of the Wain Block, diversifying operations, investing in R&D, enhancing efficiency, and committing to CSR. These efforts aim to strengthen the company's market position, ensure sustainable growth, and contribute positively to society and the environment.



Contains a brief history explanation of PT. Indo Sino Energi

■ key aspects

04

Production Goals: PT. Indo Sino Energi has set ambitious production targets for the Wain Block, aiming to significantly increase its output and contribute to the national and global energy supply. The development is structured to achieve rapid scalability and long-term sustainability.

05

Community and Environmental Commitment: The full-scale development of the Wain Block is being carried out with a strong commitment to community engagement and environmental stewardship. PT. Indo Sino Energi is dedicated to ensuring that the project benefits local communities and adheres to the highest standards of environmental protection.

06

Strategic Partnerships: To facilitate the development, PT. Indo Sino Energi is engaging with strategic partners, including local and international firms, to bring in expertise, investment, and market access, which are crucial for the project's success.

The full-scale development of the Wain Block in 2024 is a cornerstone in PT. Indo Sino Energi's journey, signifying its transition from planning and preparation to active contribution in the oil and gas sector, with a focus on innovation, efficiency, and sustainability.

■ Expansion of Portfolio

In 2024, PT. Indo Sino Energi is focusing on the expansion of its portfolio, a strategic move to strengthen its market position and ensure sustainable growth.

Here are the key components of this expansion strategy:

■ key aspects

01

Asset Acquisition: PT. Indo Sino Energi is actively seeking opportunities to acquire new assets in the oil and gas sector, particularly those with high potential for development and production. This includes both onshore and offshore blocks with proven reserves, enhancing the company's resource base and production capabilities.

02

Joint Ventures and Partnerships: To facilitate expansion and share investment risks, PT. Indo Sino Energi is entering into joint ventures and strategic partnerships with other leading energy companies. These collaborations aim to leverage collective expertise, resources, and market access to accelerate development projects and expand operational footprints.

03

Diversification of Operations: Beyond traditional oil and gas exploration and production, the company is diversifying its operations to include renewable energy sources and new energy technologies. This diversification is part of PT. Indo Sino Energi's commitment to sustainability and its vision to be a comprehensive energy provider.

■ key aspects

04

1. Innovation and Technology Adoption: Emphasizing innovation, PT. Indo Sino Energi is investing in research and development to adopt new technologies and processes that can improve operational efficiency and reduce environmental impact. This includes exploring advancements in digitalization, automation, and eco-friendly extraction methods.

05

Market Expansion: PT. Indo Sino Energi is looking to expand its market reach by entering new geographical areas and sectors. This includes targeting emerging markets with growing energy demands and establishing a presence in strategic locations to better serve its clientele and tap into new revenue streams.

06

Strengthening Supply Chain and Operations: To support its expanded portfolio, the company is also focusing on strengthening its supply chain and operational capabilities. This involves enhancing logistics, procurement processes, and operational resilience to ensure efficient and reliable service delivery across its expanded operations.

Through the expansion of its portfolio in 2024, PT. Indo Sino Energi aims to establish itself as a more diversified and robust entity in the global energy market, capable of delivering sustainable value and growth.



■ Expansion of Portfolio

In 2024, PT. Indo Sino Energi is embarking on a significant journey of expansion and innovation, with a strategic focus on broadening its portfolio and driving technological advancements in the energy sector.

Here's how these initiatives are shaping the company's future:



■ Technology and Innovation Drive

01

Investment in Research and Development (R&D): A significant portion of the company's resources is being allocated to R&D, with the goal of developing new technologies and processes that can improve exploration and production efficiency, reduce environmental impact, and lower operational costs.

02

Adoption of Digital Transformation: PT. Indo Sino Energi is embracing digital transformation by integrating artificial intelligence, machine learning, and data analytics into its operations. This move is designed to enhance decision-making processes, optimize asset management, and improve the overall operational workflow.

03

Sustainability and Clean Energy Initiatives: In line with global trends, the company is investing in clean energy technologies, including carbon capture, utilization, and storage (CCUS) and renewable energy sources. These initiatives are part of PT. Indo Sino Energi's commitment to reducing its carbon footprint and contributing to a sustainable energy future.

The year 2024 represents a pivotal phase for PT. Indo Sino Energi, with the expansion of its portfolio and a strong drive for technology and innovation. These efforts are expected to solidify the company's position as a dynamic and forward-thinking leader in the energy industry, ready to meet the evolving demands of a global market while maintaining a commitment to sustainability and excellence.

■ Strengthening Market Position

In 2024, PT. Indo Sino Energi is focusing on strengthening its market position through various strategic initiatives.

Here's how the company plans to enhance its standing in the industry and secure a competitive edge:



■ key aspects

01

Enhancing Operational Efficiency: PT. Indo Sino Energi is prioritizing the optimization of its operational processes to increase efficiency and reduce costs. By implementing lean methodologies and continuous improvement strategies, the company aims to achieve operational excellence and maximize profitability.

02

Market Expansion and Diversification: The company is exploring new markets and diversifying its product and service offerings to meet the evolving needs of the global energy sector. This includes expanding into renewable energy sources and innovative energy solutions to cater to a broader customer base and reduce dependency on traditional fossil fuels.

03

Building Strategic Alliances: Strengthening relationships with key industry players, government entities, and regulatory bodies is a critical focus. By forging strategic alliances and partnerships, PT. Indo Sino Energi aims to enhance its industry influence, gain access to new resources and markets, and collaborate on innovative projects.

■ key aspects

04

Investing in Brand and Reputation: A strong brand and positive reputation are vital for market position. The company is investing in marketing and branding efforts to build brand equity and establish itself as a trusted leader in the energy sector. This includes sustainability initiatives, community engagement, and transparent communication with stakeholders.

05

Leveraging Data and Analytics: PT. Indo Sino Energi is leveraging data analytics and market intelligence to gain insights into industry trends, customer needs, and competitive dynamics. This data-driven approach enables the company to make informed decisions, anticipate market changes, and adapt strategies accordingly.

06

Focusing on Innovation and Technological Advancements: Continuous investment in research and development (R&D) allows PT. Indo Sino Energi to stay at the forefront of technological advancements in the energy sector. Innovations in exploration, production, and sustainable energy solutions will drive the company's growth and strengthen its market position.

By implementing these strategies, PT. Indo Sino Energi aims to enhance its market position, drive sustainable growth, and establish itself as a leader in the evolving global energy landscape.

■ Corporate Social Responsibility Initiatives

In 2024, PT. Indo Sino Energi is emphasizing Corporate Social Responsibility (CSR) initiatives as a core aspect of its business strategy to enhance its positive impact on society and the environment.

Here's an overview of the company's CSR initiatives:



■ key aspects

01

Environmental Stewardship: PT. Indo Sino Energi is committed to minimizing its environmental footprint through sustainable practices. Initiatives include investing in clean energy technologies, implementing waste reduction programs, and conducting environmental impact assessments for all projects to ensure eco-friendly operations.

02

Community Engagement and Development: The company is actively involved in community development programs, focusing on education, health, and local economic growth. This includes building schools, providing healthcare facilities, and supporting small businesses in the areas where the company operates, fostering a positive relationship with local communities.

03

Employee Welfare and Development: PT. Indo Sino Energi believes in investing in its workforce. The company offers comprehensive training programs, career advancement opportunities, and a healthy work environment to ensure employee satisfaction and retention. This approach not only benefits the employees but also enhances the overall productivity and efficiency of the company.

■ key aspects

04

Ethical Business Practices: Upholding high ethical standards is a cornerstone of PT. Indo Sino Energi's CSR policy. The company enforces strict compliance with legal and ethical guidelines in all aspects of its business, including fair labor practices, anti-corruption measures, and transparent financial reporting.

05

Partnerships for Sustainable Development: Recognizing the importance of collaboration in achieving sustainable development goals, PT. Indo Sino Energi partners with NGOs, governmental agencies, and other stakeholders. These partnerships aim to address critical social and environmental issues, such as climate change, biodiversity conservation, and sustainable community development.

06

Innovation in Sustainability: The company is also investing in research and development to innovate in sustainable energy solutions, reducing the environmental impact of its operations and contributing to global efforts to combat climate change.

By implementing these strategies, PT. Indo Sino Energi aims to enhance its market position, drive sustainable growth, and establish itself as a leader in the evolving global energy landscape.



Operational Excellence Program

In 2024, PT. Indo Sino Energi is committed to enhancing its operational excellence through a comprehensive program designed to optimize performance, increase efficiency, and drive sustainable growth.

Here's an outline of the company's Operational Excellence Program:



key aspects

01

Process Optimization and Efficiency: The program focuses on streamlining processes and improving operational efficiency across all levels of the organization. By adopting lean manufacturing principles and Six Sigma methodologies, PT. Indo Sino Energi aims to minimize waste, reduce downtime, and optimize resource use.

02

Advanced Technology Integration: Leveraging cutting-edge technologies, such as IoT (Internet of Things), AI (Artificial Intelligence), and machine learning, to enhance data-driven decision-making, automate operations, and improve the reliability and efficiency of exploration and production activities.

03

Safety and Risk Management: Prioritizing safety in all operational activities, the program includes stringent safety protocols, regular training for employees, and the implementation of comprehensive risk management strategies to minimize hazards and prevent accidents.

key aspects

04

Quality Assurance and Control: Implementing rigorous quality control measures to ensure that all products and services meet or exceed industry standards. This includes regular audits, certifications, and continuous improvement programs to uphold high-quality standards.

05

Sustainability and Environmental Management: Integrating sustainable practices into the operational model, focusing on reducing the environmental impact of the company's activities. This includes efforts to reduce emissions, manage waste responsibly, and utilize renewable energy sources where possible.

06

Workforce Empowerment and Development: Investing in the workforce through training and development programs, performance management, and career progression opportunities. The goal is to build a skilled, motivated, and efficient team that is capable of driving the company's success.

07

Stakeholder Engagement and Communication: Maintaining open and transparent communication with all stakeholders, including employees, customers, investors, and the community, to ensure aligned objectives and collaborative success.

08

Continuous Improvement and Innovation: Encouraging a culture of continuous improvement and innovation within the company, enabling the identification and implementation of best practices and innovative solutions to operational challenges.

Through its Operational Excellence Program, PT. Indo Sino Energi aims to establish itself as a benchmark for operational efficiency and reliability in the oil and gas industry, ensuring long-term sustainability and value creation for its stakeholders.



THIS REPORT IS FRAMED ON OUR MATERIAL TOPICS

PT IndoSino Oil & Gas prioritizes material topics that align with global environmental trends and stakeholder expectations, validated through expert assessments and comparisons with industry peers. Since beginning Integrated Reporting in 2019, a revalidation confirmed the pertinence of these topics in managing industry risks and navigating the energy transition effectively.



Contains a brief history explanation of PT. Indo Sino Energi

This Report is Framed on Our Material Topics

PT. Indo Sino Energi meticulously identifies its key focus areas through detailed materiality assessments, integrating expert insights and stakeholder feedback. This strategic approach ensures our initiatives are both relevant and effective in responding to the ongoing global environmental paradigm shift. In 2024, as we embarked on our Integrated Reporting journey, we undertook a rigorous revalidation process. This was benchmarked against our industry peers, affirming that our selected material topics remain at the forefront of industry risks and energy transition challenges. Moreover, these topics align with our stakeholder expectations, underscoring our dedication to transparency and sustainable progress. Our commitment to these material areas is a testament to our adaptive strategy and resilience in navigating the complex landscape of the energy sector. As PT. Indo Sino Energi continues to evolve, our focus on these material topics ensures we contribute meaningfully to the industry's sustainable future, embodying our role as a forward-thinking energy company.

This Report is Framed on Our Material Topics



Prioritised

Moving forward, we have prioritised seven United Nations Sustainable Development Goals (SDGs) to drive the expectations of our Statement of Purpose. The commitment to implement these expectations is guided by the four lenses of our Sustainability Agenda, and will be measured and monitored against the relevant metrics and targets.

Material Topic	Material Matter	Impact	SDGs	Our Action	Stakeholders
Governance and Ethics Upholding the organisation's integrity and trustworthiness, while delivering value through strong governance mechanisms and ethical business practices. We are committed to a zero-tolerance policy towards all forms of bribery and corruption and will conduct our business in an ethical and compliant manner.	Good Governance	Reputation		PT. Indo Sino Energi is committed to upholding good governance through stringent frameworks and policies designed to foster a culture of integrity and compliance. With a zero-tolerance policy towards all forms of bribery and corruption, we reinforce this stance with a robust whistleblowing policy. Aligned with our commitment to transparency and ethical practices, we have also undertaken significant steps similar to industry leaders by adhering to comprehensive anti-corruption measures, underscoring our dedication to maintaining a graft-free environment.	<ul style="list-style-type: none"> Business Partners, Suppliers and Service Providers Industry Associations and Non-Governmental Organisations Customers and Consumers Local Communities Employees and Trade Unions Media Host Governments and Regulatory Authorities Shareholders, Financial Institutions, Bondholders and Investors
	Compliance	Reputation			
Safety The safety of our employees is of paramount concern and we remain dedicated in ensuring there is no loss of life, while mitigating the possibility of injuries. Ensuring our facilities, products and services are in accordance with all legal requirements and the industry's best practices is important to us, as this will safeguard the health, safety and well-being of our employees, contractors and communities, as well as the environment.	Personal Safety	People, Reputation		PT. Indo Sino Energi fosters a strong Health, Safety, Security, and Environment (HSSE) culture through proactive policies, frameworks, and initiatives. Embracing digital technology, we've recently implemented a system to monitor and manage transport drivers' fatigue levels, enhancing our commitment to safety and operational excellence.	
	Process Safety	People, Environment, Asset, Reputation		PT. Indo Sino Energi prioritizes safety through continuous vigilance, early prevention, and mitigation. By implementing the Process Safety Loss of Primary Containment Reduction (PSLR) and the Fire Prevention and Mitigation Framework (FPMF), we maintain a structured approach to managing process safety events, ensuring the well-being of our operations and personnel.	
	Crisis and Incident Management	People, Environment, Asset, Reputation		PT. Indo Sino Energi is fully equipped to handle emergencies or crises affecting personnel on our assets. We conduct regular drills to assess preparedness, review evacuation procedures, and have introduced a Headcount Management System employing radio-frequency identification (RFID) for enhanced safety and efficiency.	
	Security	People, Asset, Reputation		PT. Indo Sino Energi actively fortifies its operations against evolving challenges through security risk assessments, strict compliance with asset classification standards, and stakeholder engagement. These measures ensure our operations are secure, environmentally responsible, and adept at managing security risks, underscoring our commitment to operational safety and integrity.	

This Report is Framed on Our Material Topics

Material Topic	Material Matter	Impact	SDGs	Our Action	Stakeholders
Climate Change and Environmental Management We recognise the importance of our role as a player in the global energy sector to balance the issue of climate change with the challenge to sustainably produce affordable and reliable energy. It is also important for us to drive optimum use of hydrocarbons and water in our operations, embrace energy transition and support host countries in meeting their pledges to the Paris Agreement.	Climate Change	Environment, Reputation		The INDOSINO Climate Change Position and INDOSINO Carbon Commitments articulate our approach in addressing climate change, guiding us towards low-carbon energy solutions such as LNG and renewable energy, and include finding ways to mitigate emissions or to create value from them. The Group also supports host countries' Nationally Determined Contributions and other global agreements to maintain and enhance our reputation as a responsible energy company.	<ul style="list-style-type: none"> • Business Partners, Suppliers and Service Providers • Industry Associations and Non-Governmental Organisations • Customers and Consumers • Local Communities • Employees and Trade Unions • Media • Host Governments and Regulatory Authorities • Shareholders, Financial Institutions, Bondholders and Investors
	Environmental Management	People, Environment, Reputation		The Group is constantly working to improve operational excellence and processes to reduce our impact on the environment. While much effort is expended in complying with standards and regulations, the Group also fully supports self-regulation to strengthen our compliance with environmental laws. We achieve this by having and adhering to internal standards to manage our emissions, wastewater, hazardous waste and use of other natural resources.	
	Biodiversity and Ecosystem Services	Environment, Reputation		We minimise and prevent disruptions to biodiversity and ecosystem services as this will have detrimental outcomes on the economy and the wider community. It is a natural response from INDOSINO to restore and nurture the ecosystems around us while we operate our assets, especially in the context of decommissioning and abandonment.	
Health, Wellness and Workplace Creating a healthy and productive working environment, while equipping our workforce with the relevant skills and a determined mindset is important to INDOSINO. Best practices in these areas enable us to deliver sustainable value and create a dedicated, productive and high-performing workforce.	Health and Wellness	People, Reputation		The health and wellness of our employees and contractors are important for us, and we have gone beyond merely complying with health regulations to ensure we maintain the best levels of health and well-being. To this end, we continue to work hard to address health risk factors such as physical inactivity, unhealthy diet, inadequate sleep, mental health and unhealthy habits that can cause health issues.	
	Human Capital	People, Reputation		It is our aim to accelerate the development of our employees and to strengthen leadership capabilities to progress into leading roles. Through a variety of comprehensive and robust talent development and management programmes, we are building a strong talent pool to address succession planning, a key component for business sustainability. Talent development will always be a key agenda for INDOSINO, with an emphasis on leadership and functional competencies across disciplines.	
Product Stewardship and Supply Chain Effective supply chain management creates long-term returns in investment while increasing our competitiveness. To support this from beginning to end, we have also realised the importance of implementing a robust structure to ensure a sustainable vendor chain and product safety across the entire life cycle of our products.	Product Stewardship	People, Environment, Reputation		We are focused on the long-term value creation opportunities generated through responsible product stewardship. As consumer demand for more green products grows, it becomes critical that Life Cycle Assessments are carried out by the Group on all its products, as they are able to determine the product's social, economic and ecological impact at different life cycle stages, hence meeting an important stakeholder need.	
	Supply Chain	People, Reputation		INDOSINO is committed to managing its supply chain to extract optimal value, while also playing a leading role in supporting vendors in the energy sector. Annually, we prepare the INDOSINO Activity Outlook to provide local OGSE players with a two-year guide on where the industry is heading. In practical terms, we enable access to financing for small companies in our sector and we implement a special vendor development programme to strengthen local contractors in the energy sector, to name a few. This illustrates our role in ensuring Indonesia's energy sector remains resilient and robust.	
Social Responsibility The fair and ethical treatment of the communities around us and those who perform work for our business are important concerns for INDOSINO. We respect internationally recognised human rights in the context of our operations and how we interact with all other stakeholders. Investing in sustainable initiatives is in line with our purpose to contribute to the well-being of society, the environment and to uphold our position as a socially responsible organisation.	Human Rights	People, Reputation		We support human rights resolutely and we have implemented measures to positively manage our social performance in our business activities. INDOSINO is guided by its Human Rights Commitment, which was introduced in 2015, and have assessed our supply chain in 2019 to ensure that it is aligned with our labour and human rights practices.	
	Corporate Social Responsibility	People, Environment, Reputation		INDOSINO serves as the corporate social responsibility (CSR) division of INDOSINO, dedicated to enhancing societal well-being. The foundation oversees all CSR initiatives, emphasizing Education, Community Well-Being and Development, and Environment. INDOSINO is committed to fostering sustainable societal growth, ensuring a lasting positive impact on the community and the environment.	

POSITIVE SOCIAL IMPACT

PT. Indo Sino Energi has fostered positive social impact through strategic contractor selection emphasizing safety, environmental care, and community engagement. Our comprehensive engagement and social risk assessments have enhanced community relations, operational efficiency, and safety. Moving forward, we aim to intensify our commitment with targeted social investment programs, advanced training, and strengthened grievance mechanisms, embodying our dedication to sustainable development and mutual prosperity.



Contains a brief history explanation of PT. Indo Sino Energi

PT. Indo Sino Energi (ISE) has established itself as a catalyst for positive social impact within the communities it operates. By prioritizing strategic resource management, ISE identifies and harnesses underexplored hydrocarbon-rich regions, such as the Wain Block, ensuring that its operations contribute significantly to local economies. Through the creation of job opportunities, infrastructure development, and the implementation of comprehensive community engagement initiatives, ISE has fostered an environment of mutual growth and prosperity. The company's commitment to integrating local insights and addressing community concerns has led to robust partnerships that align with its core values and operational excellence standards.

ISE's approach extends beyond economic contributions, focusing equally on environmental stewardship and social well-being. The company's impact analysis and social risk assessments are testament to its dedication to understanding and mitigating any adverse effects its operations may have on local livelihoods, culture, health, and safety. By considering economic changes, environmental impacts, and potential social disruptions, ISE has positioned itself as a responsible player in the oil and gas industry. Its investments in continuous learning and development further demonstrate a commitment to not only advancing industry-specific skills knowledge and operational expertise but also enhancing the skills and livelihoods of those within its community.

Looking ahead, ISE is dedicated to deepening its positive social impact. The establishment of a clear and accessible grievance process has already increased trust and transparency between the company and its stakeholders, fostering a culture of open communication and accountability. By planning to further expand training programs and develop targeted social investment initiatives aimed at education, healthcare, and economic empowerment, ISE is laying the groundwork for sustainable community development. Through these efforts, ISE is not just extracting resources; it is actively contributing to the social fabric of the regions it operates in, ensuring that progress and prosperity are shared achievements.

Positive Social Impact

Social Performance

The social performance of PT. Indo Sino Energi (ISE) reflects its commitment to sustainability, corporate responsibility, and the creation of shared value for both the company and the communities within which it operates. This performance can be evaluated across various dimensions, including community engagement, local development initiatives, environmental stewardship, and ethical governance.

Initiative	What we did	Observations and impact	What's next?
Contractor Management	Strategic Selection: ISE implemented a rigorous selection process for contractors, prioritizing not only technical expertise and financial stability but also a commitment to safety, environmental stewardship, and community engagement. This ensured alignment with our core values and operational excellence standards.	<ul style="list-style-type: none"> Enhanced Operational Efficiency: Our strategic contractor management practices have led to significant improvements in operational efficiency. Projects have been completed on time and within budget, with minimized downtime and disruptions. Safety and Environmental Compliance: There has been a noticeable improvement in safety and environmental performance across our operations. Contractors aligned with our high standards have contributed to a reduction in incidents and enhanced environmental protection. 	Leveraging Technology for Better Management: ISE plans to introduce more advanced technology solutions for contractor management, including digital platforms for better collaboration, performance tracking, and compliance monitoring.
Capability Building	Invested in Continuous Learning and Development: ISE has established comprehensive training programs targeting all levels of employees, from technical staff to management. These programs are designed to enhance industry-specific knowledge, leadership skills, and operational expertise.	Enhanced Operational Efficiency: The continuous learning and development initiatives have led to significant improvements in operational efficiency. Employees are better equipped to handle complex challenges, leading to increased productivity and reduced operational costs.	ISE plans to further expand its training programs by incorporating AI and machine learning into its curriculum, ensuring that employees are prepared for the future of the energy sector.
Grievance Mechanism	Established a Clear and Accessible Grievance Process: ISE developed a structured process for stakeholders, especially local communities and employees, to raise concerns or complaints related to the company's operations. This process is made accessible through multiple channels, including a dedicated online portal, community liaison offices, and direct contact with ISE's sustainability and community relations teams.	<p>Increased Trust and Transparency: The implementation of a grievance mechanism has significantly enhanced transparency between ISE and its stakeholders. It has fostered a sense of trust, demonstrating the company's commitment to accountability and ethical conduct.</p> <p>Strengthened Community Relations: The mechanism has served as a critical tool for engaging with the community, allowing ISE to address concerns directly, mitigate potential conflicts, and strengthen relationships with local stakeholders.</p>	ISE plans to continually assess and enhance the efficiency and effectiveness of the grievance process, incorporating feedback from stakeholders and adapting to new challenges and best practices.
Social Risk Assessments	<ul style="list-style-type: none"> Comprehensive Community Engagement: Initiated dialogues with local communities, stakeholders, and government entities to gather insights and concerns related to our exploration and production activities. Impact Analysis: Conducted thorough social impact assessments to evaluate how our operations could affect local livelihoods, culture, health, and safety. This included considerations of economic changes, environmental impacts, and social disruptions. 	<ul style="list-style-type: none"> Increased Awareness of Community Concerns: Our engagement efforts revealed a strong community interest in job opportunities, environmental protection, and infrastructure development. Identification of Potential Social Risks: We recognized risks related to potential displacement, changes in social dynamics, and expectations for local development contributions. 	Development of Social Investment Programs: Based on the assessments, we will design and implement targeted social investment programs aimed at education, healthcare, infrastructure, and economic empowerment to support sustainable community development.

Positive Social Impact

Our Sustainability

At PT. Indo Sino Energi (ISE), our sustainability strategy is an integral part of our mission to deliver energy solutions in ways that are economically, environmentally, and socially responsible. We are committed to ensuring that our operations contribute positively to the sustainable development of the communities and environments in which we operate. Our approach to sustainability encompasses several key areas:

Economic Sustainability :

- Investing in Local Economies: We are committed to contributing to the economic development of local communities through job creation, local sourcing, and infrastructure development. By prioritizing local hiring and procurement, we aim to stimulate economic growth within the regions we operate.
- Efficiency and Innovation: We continuously seek to improve our operational efficiency and invest in innovative technologies that reduce costs, enhance productivity, and minimize our environmental impact. This approach ensures the long-term viability of our projects and maximizes value for our stakeholders.

Environmental Sustainability :

- Minimizing Environmental Impact: Our environmental strategy focuses on reducing emissions, managing waste, conserving biodiversity, and using water resources responsibly. We implement best practices in environmental management across all our operations, from exploration to production.
- Climate Change Mitigation: ISE is actively engaged in efforts to mitigate climate change by assessing and reducing our carbon footprint. We explore opportunities for energy efficiency, carbon capture and storage, and the integration of renewable energy sources into our operations.

Social Sustainability :

- Community Engagement and Development: We believe in building strong relationships with the communities where we operate. Through open dialogue, community investment, and development programs, we aim to address the needs of local communities and support their sustainable development.
- Health and Safety: Ensuring the health and safety of our employees, contractors, and community members is paramount. We adhere to strict health and safety standards and conduct regular training and awareness programs to foster a culture of safety.

Governance and Ethics :

- Strong Corporate Governance: ISE is guided by principles of transparency, integrity, and accountability. We adhere to high standards of corporate governance and ethical conduct to ensure that we operate responsibly and in alignment with our stakeholders' expectations.
- Compliance: We comply with all applicable laws, regulations, and industry standards in the countries where we operate. Our commitment to compliance helps us to manage risks effectively and maintain our license to operate.


Looking Forward :

- Sustainability Reporting: We are committed to transparent reporting on our sustainability performance. By regularly publishing sustainability reports, we provide stakeholders with insights into our strategies, initiatives, and progress toward achieving our sustainability goals.
- Continuous Improvement: We recognize that sustainability is a journey, not a destination. We are committed to continuous improvement, learning from our experiences, and adapting our strategies to meet evolving sustainability challenges and opportunities.

At PT. Indo Sino Energi, sustainability is not just an operational requirement; it is a core value that drives our business strategy. We are dedicated to advancing energy exploration and development while ensuring that our legacy is one of positive contributions to a sustainable future.

SWOT ANALYSIS OF ISE

PT. Indo Sino Energi excels in strategic resource management, technological innovation, and environmental stewardship, with a skilled workforce ensuring operational excellence and strong stakeholder relationships. Challenges include market volatility, operational risks, capital intensity, and adapting to the energy transition, amidst regulatory shifts and competitive pressures.

 Contains a brief history explanation of PT. Indo Sino Energi

PT. Indo Sino Energi (ISE) stands out in the oil and gas industry through its strategic resource management, showcasing an unmatched ability to identify and develop underexplored hydrocarbon-rich areas like the Wain Block. This strength is bolstered by ISE's commitment to technological innovation, allowing it to enhance operational efficiency and minimize environmental impacts. The company's skilled workforce and culture of continuous improvement further ensure operational excellence, while its dedication to environmental stewardship and strong stakeholder relationships highlights its role as a responsible industry leader.

However, ISE faces challenges inherent to the energy sector, including sensitivity to market volatility, which affects financial performance due to fluctuating global oil and gas prices. Operational risks associated with exploration and production, such as accidents or geological challenges, present potential hurdles. Additionally, the capital-intensive nature of the industry requires substantial investment, placing financial strain on resource allocation and project execution.

Opportunities for ISE lie in the global shift towards renewable energy sources, offering a chance to diversify its energy portfolio and invest in alternative projects. Technological advancements present avenues for enhancing efficiency and reducing operational costs, while expanding into emerging markets can provide new revenue streams. Strategic partnerships and alliances also offer access to new technologies and markets, fostering growth and innovation within the company.

Yet, ISE must navigate threats including regulatory changes that may increase compliance costs, intense competition from both traditional and renewable energy sectors, and geopolitical instability affecting supply chains. Environmental incidents also pose significant risks, with potential financial, regulatory, and reputational repercussions. Despite these challenges, ISE's strategic approach positions it well to adapt and thrive, reinforcing its leadership in advancing sustainable energy production.



SWOT Analysis of PT. Indo Sino Energi (ISE)



STRENGTHS

- 1. Strategic Resource Management:** ISE's ability to identify and exploit underexplored hydrocarbon-rich regions, such as the Wain Block, highlights its expertise in leveraging advanced geological insights for optimal resource extraction.
- 2. Technological Innovation:** The emphasis on cutting-edge technology allows ISE to enhance operational efficiency and minimize environmental impact, setting a high industry standard.
- 3. Operational Excellence:** With a highly skilled workforce and a continuous improvement ethos, ISE ensures high productivity and safety, maintaining operational excellence.
- 4. Environmental Stewardship:** ISE's integration of sustainable practices across its operations, often surpassing regulatory requirements, contributes to a positive environmental legacy.
- 5. Strong Stakeholder Relationships:** Maintaining transparent communication and collaboration with all stakeholders fosters a stable operational environment.

WEAKNESSES

- 1. Market Volatility Sensitivity:** As an entity in the energy sector, ISE's financial performance can be sensitive to fluctuations in global oil and gas prices.
- 2. Operational Risks:** Despite high operational standards, the inherent risks of exploration and production activities, such as accidents or unexpected geological challenges, can impact operations.
- 3. Capital Intensity:** The oil and gas industry requires significant capital investment for exploration and production activities, which can strain financial resources.

OPPORTUNITIES

- 1. Energy Transition:** The global shift towards renewable energy sources presents opportunities for ISE to diversify its energy portfolio and invest in alternative energy projects.
- 2. Technological Advancements:** Continuous advancements in technology offer ISE opportunities to further enhance efficiency, reduce costs, and minimize environmental impact.
- 3. Emerging Markets:** Expanding operations into emerging markets can provide new revenue streams and reduce dependence on volatile markets.
- 4. Partnerships and Alliances:** Strategic partnerships can offer access to new technologies, markets, and expertise, facilitating growth and innovation.

THREATS

- 1. Regulatory Changes:** Increasingly stringent environmental regulations can result in higher compliance costs and operational adjustments.
- 2. Competition:** Intense competition from both traditional energy companies and new entrants in the renewable sector can erode market share.
- 3. Geopolitical Instability:** Operations in geopolitically unstable regions can pose risks to supply chains and market access.
- 4. Environmental Incidents:** Potential environmental incidents, such as oil spills, can have significant financial, regulatory, and reputational repercussions.

The SWOT analysis of PT. Indo Sino Energi (ISE) clearly establishes its standing as a pioneering force within the oil and gas sector. The company's strategic focus on exploiting underexplored hydrocarbon-rich areas, coupled with its investment in state-of-the-art technology, positions it at the forefront of operational efficiency and environmental stewardship. This approach not only sets a high industry standard but also reflects ISE's deep commitment to sustainable energy production, underscoring its role as a leader in driving innovation and responsible resource management.

However, the analysis also brings to light the challenges that ISE faces, including the susceptibility to market volatility inherent in the global energy sector. The cyclical nature of oil and gas prices can significantly impact financial performance, making robust risk management and strategic planning essential for maintaining stability. Additionally, operational risks associated with exploration and production activities, alongside the substantial capital investment required in the industry, present ongoing challenges that ISE must adeptly manage to sustain its growth and operational excellence.

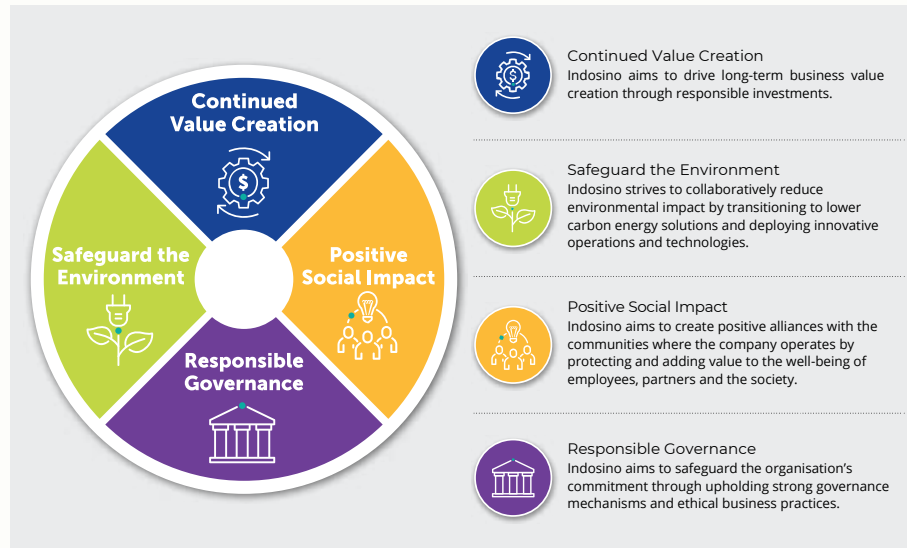
Furthermore, the global energy transition towards renewable sources poses both a challenge and an opportunity for ISE. As the world shifts away from fossil fuels, adapting to and capitalizing on this transition will be crucial for ISE's future success. The company's ability to innovate and diversify its energy portfolio will not only mitigate the risks associated with this global shift but also position ISE to lead the industry into a more sustainable and diversified energy future. Navigating these complexities requires a forward-thinking approach and a commitment to continuous improvement, qualities that ISE has consistently demonstrated throughout its operations.

Sustainability at Indosino Oil & Gas

Sustainability lies at the core of PT. Indo Sino Energi's (ISE) operations. Recognizing early on the critical role sustainability plays in maintaining a robust, accountable, and morally upright enterprise, ISE has committed to adapting and evolving its sustainability practices in line with shifting times and stakeholder expectations. Anchored by our renewed Purpose Statement, which envisions ISE as a forward-thinking provider of energy and solutions fostering a sustainable future for all, our Sustainability Agenda is steered by top-tier management, highlighting its pivotal importance to our organization. ISE's commitment to sustainability is directed through four key pillars that correlate with seven United Nations Sustainable Development Goals (SDGs), emphasizing our dedication to steering global efforts towards a more sustainable trajectory while achieving our business objectives.

OUR SUSTAINABILITY LENSES

At PT. Indo Sino Energi (ISE), our commitment to sustainability is guided by four foundational principles: Sustained Value Generation, Environmental Preservation, Community Enrichment, and Ethical Leadership. These principles offer ISE a comprehensive perspective on our corporate actions and their impact on both our stakeholders and the broader community. We are deeply conscious of the influence our operations have on the world around us and are dedicated to maintaining the utmost standards of governance in every aspect of our work. This dedication ensures that our endeavors in value generation are pursued ethically, with a steadfast commitment to environmental preservation and fostering positive change within the communities we serve.



Sustainability at Indosino Oil & Gas

OUR SUSTAINABILITY GOVERNANCE

At PT. Indo Sino Energi, our sustainability governance framework is structured to ensure accountability, transparency, and ethical conduct at the core of our operations. Guided by the highest levels of management, this framework embeds sustainability into our strategic decision-making processes, reflecting our commitment to the long-term well-being of our stakeholders, the environment, and the communities in which we operate. Our approach is designed to align with global sustainability standards and principles, including the United Nations Sustainable Development Goals (SDGs), thereby reinforcing our dedication to leading the industry toward a more sustainable and responsible future. Through regular monitoring, reporting, and stakeholder engagement, we continuously assess and refine our sustainability practices to meet evolving challenges and opportunities, ensuring ISE remains at the forefront of sustainable energy development.

Purpose	Roles and Responsibilities	Composition
<p>To guide the progression and execution of Sustainability Development (SD) and Health, Safety, Security, and Environment (HSSE) initiatives within PT. Indo Sino Energi, ensuring they align with the expectations of our key stakeholders in all areas of operation.</p> <p>Our aim is to seamlessly integrate SD and HSSE priorities to foster initiatives that are in harmony with PT. Indo Sino Energi's Statement of Purpose, thereby guaranteeing the significance and impact of our outcomes.</p> <p>We are committed to regularly informing and offering recommendations to the PT. Indo Sino Energi HSSE Executive Leadership Team (ELT) regarding the advancement of significant sustainability projects throughout the company that support and advance one or more of the United Nations Sustainable Development Goals (SDGs).</p>	<p>Guide the formulation and approval of Health, Safety, Security, and Environment (HSSE) policies, along with Sustainability-related declarations and relevant guidelines, covering strategies for execution, evaluation, and reporting at PT. Indo Sino Energi.</p> <p>Offer direction to ensure robust SD and HSSE initiatives are effectively implemented. Review and approve PT. Indo Sino Energi's SD and HSSE performance metrics, including the advancement of critical supporting projects.</p> <p>Stay informed about current and potential sustainability challenges that could impact PT. Indo Sino Energi's reputation, addressing issues beyond just stakeholder concerns, and navigate solutions.</p> <p>Manage the publication of our achievements concerning sustainability critical areas and long-term objectives in PT. Indo Sino Energi corporate disclosures. Communicate with the HSSE Executive Leadership Team (ELT) regarding major approvals and suggest areas for ongoing enhancement.</p>	<p>The Council's Chairperson is designated by the President and Group CEO of PT. Indo Sino Energi, while the Council members are selected by the Council's Chairperson.</p> <p>This Council is structured to include a well-balanced representation from critical functions crucial for driving sustainability initiatives across both the operational business units and the holding company. This ensures a comprehensive approach to sustainability, incorporating diverse perspectives and expertise. The composition of the Council is periodically evaluated by the Group Health, Safety, Security, and Environment team to ensure it remains aligned with the company's sustainability objectives and the dynamic nature of our industry.</p>

STATEMENT ON RISK MANAGEMENT AND INTERNAL CONTROL

The Karamba Field development includes one re-entry and two infill wells, flowlines connecting these wells to a Central Processing Plant, and a 16.3 km onshore pipeline to the PHKT network, with receiving facilities and gas metering.

Contains a brief Vision & Mision explanation of PT. Indo Sino Energi



STATEMENT ON RISK MANAGEMENT AND INTERNAL CONTROL

As part of institutionalizing a good corporate governance culture, PT Indo Sino Energi (ISE) Board (the Board) is pleased to provide the following statement which outlines the nature and scope of risk management and internal control of PT Indo Sino Energi and its subsidiaries (the ISE Group) during the year under review. The ISE Statement of Corporate Governance can be referred to for more details.

BOARD'S ACCOUNTABILITY

The Board is responsible to oversee and ensure a sound system of risk management and internal control for the ISE Group. An effective risk management framework helps the company to achieve its goals and perform more efficiently. The framework includes identifying potential risks, evaluating their impact, and implementing controls to mitigate these risks.

The Board is also cognizant that its role in providing risk oversight sets the tone and culture towards embedding risk management practices across the ISE Group.

The ISE Board Charter includes risk management and internal control oversight as one of the main functions of the Board, in line with the requirements of relevant corporate governance standards.

The Board risk oversight is supported by the following committees:

Board Governance and Risk Committee (BGRC)

The BGRC was established to assist the Board in providing, amongst others, direction, guidance, and oversight on risk management matters. The BGRC reviews, deliberates, and endorses risk policies and practices as well as oversees the adequacy of risk management systems to effectively monitor and manage risks in the ISE Group.

Board Audit Committee (BAC)

The BAC assists the Board in fulfilling its responsibilities relating to internal controls and financial reporting by performing oversight functions. The BAC ensures good governance practices and proper conduct while safeguarding the ISE Group's assets.

RISK MANAGEMENT

Risk management is an integral part of the ISE Group's activities. Ongoing improvement to strengthen the monitoring of principal risks is crucial. The Board focuses on building a sustainable risk management culture to ensure that potential risks are identified, evaluated, and managed effectively, thus contributing to the decision-making process.

INTERNAL CONTROL

The ISE Group's internal control framework aligns with best practices to ensure the effective achievement of its business objectives. This involves regular assessment, monitoring, and continuous improvement of internal controls.

The ISE Group remains committed to maintaining a robust internal control environment to safeguard its assets and ensure the integrity of its financial reporting.

STATEMENT ON RISK MANAGEMENT AND INTERNAL CONTROL

Group-wide implementation of risk management and internal control is supported by the following committees:

<p>Executive Leadership Team (ELT)</p>	<p>The ELT is established to assist the President and Group Chief Executive Officer (CEO) in the management of the company and is responsible for providing assurance on the adequacy of risk management strategies as well as high impact risks related to projects, investments, and acquisitions. The ELT reviews key risk management matters to provide guidance and direction prior to BGRC and Board approval.</p>
<p>Risk Management Committee (RMC)</p>	<p>The RMC is formed to serve as a platform to assist the ELT, the BGRC, and the Board in identifying principal risks and reviewing governance documents at the corporate level as well as to provide assurance on risk management practices across the ISE Group that protect and safeguard ISE's interests. The RMC also promotes sound risk management practices through the sharing of best practices and experiences and providing recommendations for improvement across the ISE Group.</p>

The ISE Group's system of risk management and internal control seeks to manage and control risks appropriately. The system provides reasonable but not absolute assurance against material misstatement, loss, or the occurrence of unforeseeable circumstances.

In order to build highly capable organizations to meet risk management requirements, the ISE Group provides continuous risk management capability development and knowledge-sharing programs.

The risk management capability development and knowledge-sharing programs are conducted through various platforms, aimed at building the competency of risk practitioners. Corporate membership to risk associations also provides platforms for risk practitioners to participate in industry-wide forums and knowledge-sharing sessions that are aligned with global standards and best practices.

The knowledge-sharing programs consist of risk publications, risk conversations, a community of practice, and a series of risk engagements, all of which propagate the sharing of current risk management practices and knowledge.

Risk Policy
ISE's Risk Policy (refer Chart 1) stipulates the general principles and guidelines for actions which influence operations. It gives a clear communication of the management's expectations in relation to risk management practices throughout the ISE Group.

The ISE Risk Policy is complemented by the ISE Resiliency Model that provides a structured, holistic view of risk and resiliency towards managing the ISE Group's risks, focusing on three areas of business resilience, namely Enterprise Risk Management (ERM), Crisis Management, and Business Continuity Management (BCM). The Enterprise Risk Management, Crisis Management, and Business Continuity Management activities are actively coordinated across the ISE Group. The status of risk management activities and the ISE Resiliency Model implementation is reported regularly to the RMC.

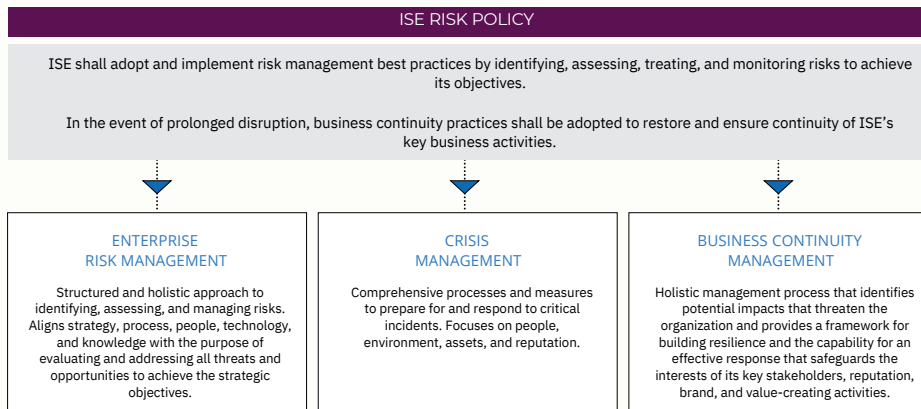


Chart 1: ISE Risk Policy and ISE Resiliency Model

STATEMENT ON RISK MANAGEMENT AND INTERNAL CONTROL

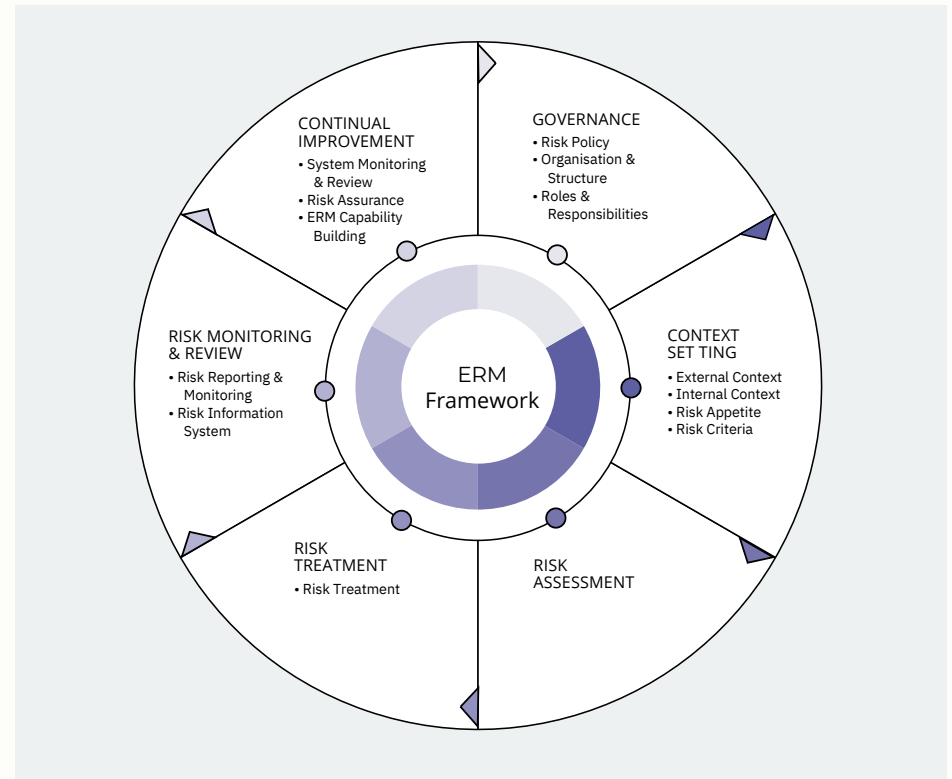
Enterprise Risk Management
The Enterprise Risk Management (ERM) process is an integral part of managing the business as it provides a guide to systematically identify, assess, treat, monitor, and review risks. It aims to identify the risks that may affect the achievement of business objectives.

Risk profiles established through the ERM process are monitored and controlled. The ERM process includes identifying principal risks and integrating risk management practices across the ISE Group. This approach ensures that risks are effectively managed by the respective units.

Business Units (BUs) or Operating Units (OPUs) report their management and board on a quarterly basis.

ISE Risk Appetite

ISE Risk Appetite articulates the type of risks that ISE is willing to pursue or accept to achieve its strategic and operational objectives. It involves setting risk tolerance and threshold levels. The risk appetite is reviewed and managed quarterly by the ELT, BGRC, and the Board.



STATEMENT ON RISK MANAGEMENT AND INTERNAL CONTROL

Crisis Management

Crisis Management (CM) (refer Chart 3) is an integrated process that aims to prepare an organisation, at both domestic and international operations, to respond and manage crises in the risk areas to protect People, Environment, Asset, and Reputation (PEAR).

There is a three-tiered response system which provides the demarcation of roles and responsibilities between emergency site management, operating unit management, corporate and internal/external response agencies and/or authorities. Testing & Exercising (T&E) via simulation of test scenarios validates the effectiveness of response strategies as well as promotes continual improvement as identified in the Crisis Management Plan (CMP). T&E programmes were carried out at the respective HCU, BUs and OPUs.

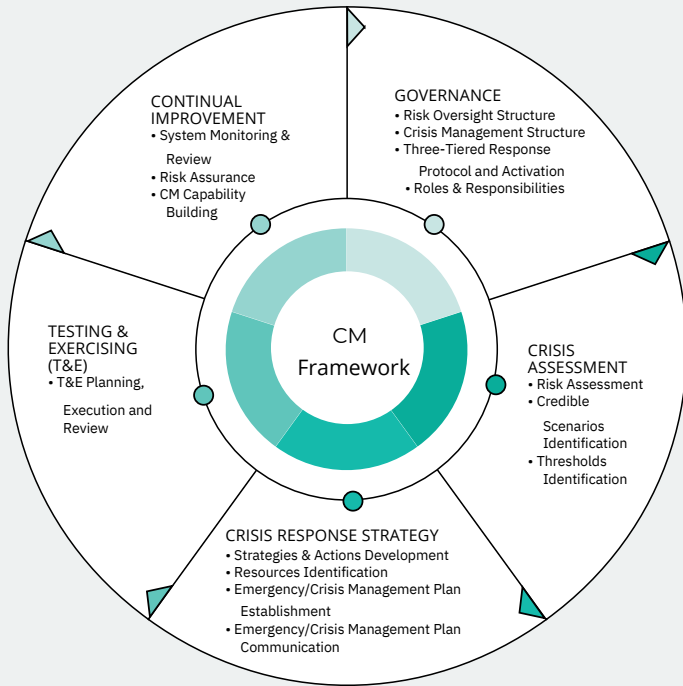


Chart 3: Crisis Management Framework

STATEMENT ON RISK MANAGEMENT AND INTERNAL CONTROL

Business Continuity Management

Business Continuity Management (BCM) (refer Chart 4) is a management process that aims to build the capability of PT Indo Sino Energi to recover and continue delivery of products or services at acceptable predefined levels following any prolonged disruption.

Business Continuity Plans (BCP) were established through the BCM process to enhance PT Indo Sino Energi's preparedness to recover and restore businesses' critical functions within a reasonable period, sustaining the company's activities and minimizing disruptions to stakeholders. Testing and Evaluation (T&E) via simulation of test scenarios validate the effectiveness of recovery strategies and maintain a high level of competence and readiness as identified in the BCP. T&E programs were carried out at the respective BUs and OPUs.

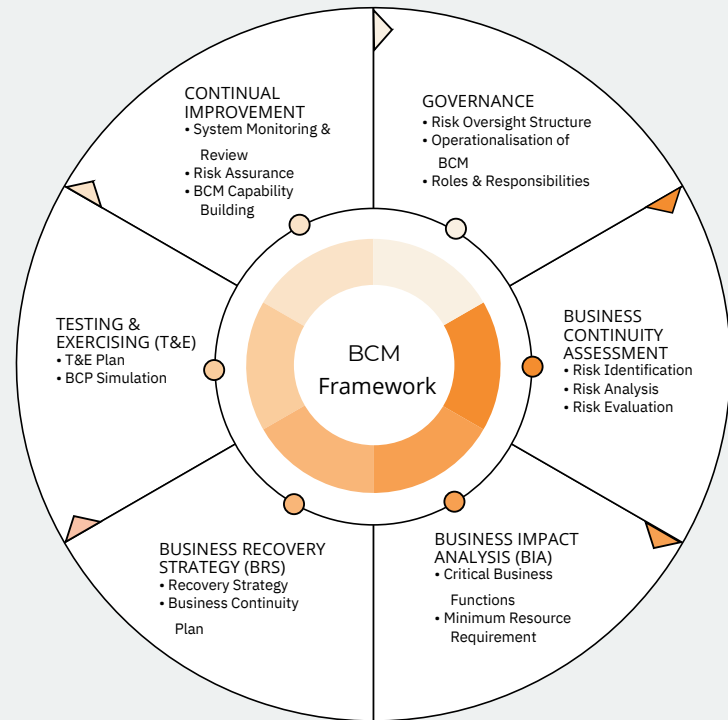


Chart 4: Business Continuity Management Framework

STATEMENT ON RISK MANAGEMENT AND INTERNAL CONTROL

KEY INTERNAL CONTROL

As part of the PT Indo Sino Energi Resiliency Model, internal controls were developed to facilitate standardization of processes and practices across the ISE Group for focus risk areas such as Financial, Health, Safety, Security and Environment (HSSE), Plant and Facilities, Project, Procurement, Information and Communication Technology (ICT), Reputation, Human Capital, and Country.

FINANCIAL

Limits of Authority

The Limits of Authority (LOA) defines decision-making limits within the ISE Group, providing a balance between effective and quality decision-making and appropriate management control.

LOA development and revision are independently reviewed by the Group Financial Control Department, to ensure adherence and consistency with the ISE Group LOA Framework and the ISE LOA Guidelines.

Budget Approval

Budget is an important internal control mechanism used by the ISE Group to ensure an agreed allocation of resources across the organization. Items are sufficiently prioritized to support strategic directions. The ISE Group performs a detailed review of its budgets and budgeting strategies including comparison against the company's business plan, performance results, and assessment of performance against the budgets. Such comparisons are widely shared across the ISE Group.

Financial Control Framework

The ISE Group has a Corporate Financial Framework (CFF) with the principal objective of providing reasonable assurance on the quality of financial reporting. This is achieved through a review of financial risk management and the integrity of the company's financial statements.

The CFF requires amongst others, documentation of key controls, remediation of control gaps as well as periodic testing of control operating effectiveness. On a semi-annual basis, each key process owner at various management levels is required to complete and submit a letter of assurance which provides confirmation on compliance to key controls for the areas which they are accountable for.

Corporate Financial Policy

The Corporate Financial Policy (CFP) prescribes the ISE Group's governing requirements in effecting the consistent application of sound financial risk management practices. This provides a foundation upon which financial risk exposures are identified and strategies to manage such risks are developed.

The financial risk management practices are implemented across the ISE Group in accordance with the requirements of the CFP. This enables visibility on the ISE Group's key financial risk exposures for improved risk management.

In addition to the CFP, the ISE Liquidity Risk Management Protocol (LRMP) and ISE Trading Risk Mandate have been established to safeguard the ISE Group's liquidity position and risk financial sustainability, as well as to ensure alignment of risk management practices with ISE's focus with regard to trading activities.

HEALTH, SAFETY, SECURITY AND ENVIRONMENT (HSSE)

The ISE Group's Health, Safety and Environment (HSE) policy is supported by the HSE Management System which comprises of a formal set of requirements to manage HSE risks. This system is aligned with the ISE Security Management System (SeMS) within the Industry Security Risk Management (ISRM) guidelines implemented across the ISE Group. HSE and SeMS include clear requirements on the performance and documentation of HSE management activities. HSE audits are regularly conducted to ensure that management systems remain effective.

The ISE HSSE Executive Leadership Team (HSSE ELT) is responsible for overseeing management that defines group-wide HSSE policies and strategies. HSSE ELT reviewed PT Indo Sino Energi's HSSE performance three times during the year. Additionally, the HSSE ELT is a platform to discuss HSSE performance and priorities.

STATEMENT ON RISK MANAGEMENT AND INTERNAL CONTROL

KEY INTERNAL CONTROL (CONTINUED)

Effective execution of key strategies and associated issues that impact group-wide HSSE key result areas, risk management and internal controls, and provide guidance on the way forward.

HSSE and Security Risk Assessments were carried out to identify potential hazards/threats, analyze the adequacy of current HSSE and Security measures and propose mitigations, gap closure activities and corrective measures. HSSE T&E Assurance is a comprehensive assessment that was carried out by Group HSSE to provide assurance on the effectiveness of HSSE controls.

In addition, plants and facilities' self-assessment and assurance fieldwork activities were conducted to ensure group-wide plants and facilities internal controls are in place and in compliance with the established governing documents.

PROJECT

Project risk management is implemented in accordance with the ISE Project Management System (PPMS). Phase Gate Process is designed to retain and maximise project value across a project's life cycle which includes the design, construction, operation, and decommissioning of ISE capital projects leading to project start-up.

The purpose of the PPMS Phase Gate Process is to bring assurance that overall processes lead to the decision-making associated with transforming business opportunity into executed assets. The process covers all project phases with detailed assurance on key controls such as project selection, scope definition, and execution standardisation. Such controls provide the key foundation to enable overall project consistency of practices.

Project risks are identified, assessed, mitigated, and validated through assurance programmes under the PPMS framework. The processes are meant to address the highest level of technical and commercial factors significantly affecting the project's viability.

PROCUREMENT

Procurement management serves as a key function in supporting the management and is implemented based on the ISE Group Procurement (GP) Manual which outlines key processes and procedures. The GP Manual duly established for group-wide adoption.

The ISE Group Procurement Team (GP IT) provides stewardship on the overall strategic direction of the ISE Group Procurement's GP. It places the overall group focus to address sourcing of critical goods, types of key suppliers, and major issues heavily linked to mutual concern and interest.

Group Procurement has clearly defined authorisation procedures for awarding of tenders and procurement transactions covering both capital and revenue expenditure items.

ABOUT COLLABORATION

PT. Indo Sino Energi spearheads Indonesia's energy transformation through collaborative partnerships, prioritizing excellence and sustainability. With a focus on transparency and shared objectives, the company seeks to accelerate clean energy adoption and contribute to global sustainability goals, embracing new technologies and market opportunities.

Contains a brief about collaboration in PT. Indo Sino Energi.

PT. Indo Sino Energi

123

INDOSINO
PT. Indo Sino Energi



ABOUT COLLABORATION

PT. Indo Sino Energi stands at the vanguard of Indonesia's energy transformation, recognizing that the journey toward sustainable energy solutions is a collaborative endeavor. With a foundation built on innovation and a clear vision for the future, the company is actively seeking professional partnerships that align with its commitment to excellence and sustainability. By opening its doors to collaboration, PT. Indo Sino Energi is not only looking to enhance its technological capabilities and extend its market reach but also to forge alliances that drive collective progress and deliver mutual benefits.

The company's approach to collaboration is underpinned by a professional ethos that values transparency, reliability, and shared objectives. In pursuing partnerships, PT. Indo Sino Energi is dedicated to creating synergies that leverage the strengths of each party. Whether it's with government entities, private sector innovators, or community organizations, the aim is to build relationships that are grounded in professionalism and that contribute to the overarching goal of advancing Indonesia's clean energy sector. The company believes that through professional cooperation, it can tackle complex challenges, accelerate the adoption of clean energy, and contribute to national and global sustainability goals.

Understanding that the energy landscape is ever-evolving, PT. Indo Sino Energi is poised to adapt and grow with potential partners who bring fresh perspectives and expertise. The company is keen on embracing new technologies, business models, and market opportunities that arise from these professional collaborations. With a forward-looking strategy, PT. Indo Sino Energi is not just adapting to change; it is seeking to be an agent of change, facilitating a future where sustainable energy is not just an aspiration but a reality.

124

Letter from the President and Group Chief Executive Officer

I am pleased to share that PT Indo Sino Energi has achieved significant milestones in 2023, which include the expansion of our renewable energy portfolio and advancements in sustainable energy technologies. In alignment with our commitment to a greener future, we have also continued to prioritize safety, security, and environmental stewardship across all operations.

COMMITMENT TO HEALTH, SAFETY, SECURITY AND ENVIRONMENT

It remains our top priority at PT Indo Sino Energi to demonstrate a steadfast commitment to our Health, Safety, Security, and Environment protocols. With safety and risk management practices refined in 2023, we have reduced incidents and maintained high standards. This ensures a safer work environment for all our employees.

We aim to deliver our best in ensuring a safe working environment for our staff, both in the field and the office. By fostering a culture that prioritizes health and safety, we continue to make strides in our goals to minimize workplace hazards and risks. Our dedication to these principles is unwavering as we uphold our standards to improve safety and HSSE competencies.



FOCUSED EXECUTION OF PT INDO SINO ENERGI'S STRATEGY

In 2023, we marked the third anniversary of PT Indo Sino Energi with a strategic plan aligned with our vision for sustainable growth. We have embraced renewable energy sources and integrated innovative technologies into our existing operations, significantly enhancing our energy efficiency and sustainability.

By leveraging our capabilities across the entire value chain, with renewable energy as an addition to our integrated portfolio, we strive towards finding the equilibrium of providing energy in a secure, affordable, and sustainable manner that would help us navigate the energy transition towards a lower-carbon future.

Overall, the Group was steadfast in delivering significant results for the year under review.

We strengthened our resource base under Maximizing Cash Generation to ensure the sustainability of the organization. Key highlights include the advancement of renewable energy projects and the successful execution of strategic initiatives.

In the LNG front, we stepped up our efforts in providing cleaner energy solutions. Our focus on renewable energy, particularly in the hydrogen sector and Mini LNG plants, has positioned us as a leader in the energy transition. We continue to expand our capabilities and infrastructure to meet the growing demand for clean energy.



Letter from the President and Group Chief Executive Officer

PT INDO SINO ENERGI SUSTAINABILITY AGENDA

As a dedicated advocate for responsible energy use and environmental stewardship, we focused on economic, environmental, and social sustainability. In 2023, we solidified our commitment to these principles with strategic initiatives aimed at reducing carbon emissions and enhancing energy efficiency.

In July 2023, we hosted the Indo Sino Energy Roundtable, engaging with key stakeholders on the future of clean energy in the region. The discussions centered around sustainable energy solutions, reducing greenhouse gas emissions, and fostering innovation in renewable energy technologies. This event marked a significant step in our journey towards a sustainable energy future.

As we continue to ensure the energy security of Indonesia, PT Indo Sino Energi is committed to reducing its greenhouse gas (GHG) emissions. Our goal is to achieve net-zero emissions by 2045 through various initiatives and strategic partnerships. By leveraging our capabilities across the entire value chain, PT Indo Sino Energi is well-positioned to lead the energy transition towards a lower-carbon future. We remain dedicated to providing secure, affordable, and sustainable energy solutions for the communities we serve.

With a clear focus on sustainability, innovation, and excellence, PT Indo Sino Energi is poised to navigate the challenges and opportunities in the energy sector, ensuring long-term growth and success.

We pursued growth opportunities under Expanding Core Business and grew our presence with the acquisition of new renewable energy projects. This includes our focus on hydrogen energy, as well as ongoing investments in Mini LNG plants. Domestically, the development of new energy facilities is ready to deliver its products to the market. In September 2023, the first phase of our hydrogen cylinder project was completed, setting a new standard in energy storage and efficiency.

We made significant progress in renewable energy and specialty technologies as part of our Expanding Core Strategy. PT Indo Sino Energi is primed to support the sustainable development of the energy sector through our innovative projects. The successful launch of our Floating LNG Facility (PELIG DUA) is a prime example of our dedication to providing cleaner energy solutions.

Driven by our commitment to excellence in business delivery, 93 percent of our targeted projects have successfully completed the first phase and are on track. Today, PT Indo Sino Energi stands as a leader in the energy sector, ready to meet the growing demands of clean energy with innovative solutions.

As we gear towards the next phase of growth, we see technology as an important enabler for us to increase greater value across our integrated value chain. We have accelerated our digital efforts towards achieving this goal, which opens up more opportunities for our solutions, with improvements in customer experience and influencing how services, products, and solutions are delivered.

Our integrated digital procurement platform has seen significant progress, allowing us to source and manage resources efficiently. By December 2023, PT Indo Sino Energi had garnered more than 500,000 subscribers to our energy services.



Safeguard the Environment



In support of SDGs:

We believe that safeguarding the environment means going beyond compliance with existing environmental legislation. Equally important is the environmental impact our operations may have on society over time. Anchoring on this approach, we manage impacts across the entire business value chain by driving improvements in operational efficiency, innovation, and the use of advanced technology to acquire accurate operational data.

Concurrent to strengthening our core operations responsibly, we are Stepping Out into the renewable energy space and continue to advocate natural gas and LNG as alternative low-carbon fuels. These actions will ease the shift to decarbonisation towards a sustainable future for society.

PT Indo Sino Energi Climate Change Position

PT Indo Sino Energi duly recognizes its corporate responsibility as a leader in the energy sector to balance the issue of climate change with the challenge of sustainably producing affordable and reliable energy.

CLIMATE RESPONSE

Responding to a changing climate poses both risks and opportunities for PT Indo Sino Energi. As governments, societies, and other key stakeholders continue to call for concrete climate action, it is clear that the energy industry has an important responsibility to take action. Some of these actions include reducing and measuring greenhouse gas (GHG) emissions, enhancing energy efficiency, improving operational practices, and delivering low-carbon solutions to our customers and suppliers. Our climate response aligns with international standards to address stakeholder concerns.

CONTINUOUS IMPROVEMENTS IN OPERATIONAL EXCELLENCE

- Reduction of GHG Scope 1 and 2 emissions through innovative hydrogen and LNG technologies.
- Enhancing energy efficiency in operations.
- Investment in research and development for sustainable energy solutions.

DELIVER LOW-CARBON SOLUTIONS

- Supply of natural gas and LNG as low-carbon fuels.
- Development of green hydrogen projects to diversify our portfolio.
- Increase fuel efficiency in our products and services.

RESPONSIBLE REPORTING TO STAKEHOLDERS

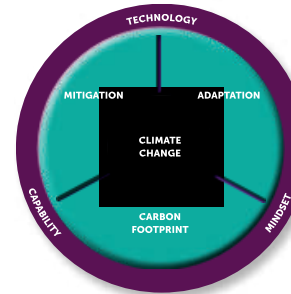
- Transparent reporting and disclosure initiatives.
- Compliance with GHG reduction targets.
- Implementation of GHG and energy efficiency initiatives.
- Regular internal and external GHG verification exercises.

Safeguard the Environment

A cornerstone of the climate response equation is the transition towards a low-carbon economy, and PT Indo Sino Energi has progressed well in reducing emissions, advocating clean energy, and driving operational excellence. These actions meet the requirements of the PT Indo Sino Energi Climate Change Framework and PT Indo Sino Energi Carbon Commitments. We support Indonesia's Nationally Determined Contribution (NDC) to reduce GHG emissions by 29% by 2030 and the NDCs of the countries where we operate.

Overarching Framework

PT Indo Sino Energi Climate Change Framework:
We focus on carbon footprint, mitigation and adaptation, enabled through technical innovation, technology deployment, and capability development.



Carbon Footprint:
Good GHG accounting practices (relating to our carbon footprint) enable us to monitor, report and take proactive measures to reduce GHG emissions within our operations and products.

Mitigation:
Mitigation delivers economic benefits through operational excellence and gas monetisation.

Adaptation:
Strengthening our resilience to physical impacts of climate change will build business sustainability as well as reduce potential asset damage.



Safeguard the Environment

PT INDO SINO ENERGI CARBON COMMITMENTS

The PT Indo Sino Energi Carbon Commitments were developed to guide the management of our GHG emissions mainly through renewable energy initiatives and energy efficiency improvements. The commitments have since matured operationally, evolving with the market, and leveraging technical innovation and advanced technology.

We enhanced our commitments in 2023 to incorporate new requirements on managing hydrogen energy, carbon pricing, carbon offsets, and renewable energy. The PT Indo Sino Energi Carbon Commitments provide the business and Project Agreement Contractors (PACs) the approach for an effective implementation of the commitments. Our Health, Safety, Security and Environment (HSSE), Project, and Operations teams oversee the incorporation of the commitments in both domestic and international business systems and processes where relevant.

Planning and Projects

- Zero continuous flaring and venting of hydrocarbons to be incorporated in the design of new energy projects.
- High hydrogen energy development to incorporate carbon capture, transport, utilization, and sequestration (CCUS) technologies in the project design.
- Carbon offsets are considered in project decision-making together with the option of carbon offsets where feasible.

Operations

- Zero continuous venting of hydrocarbons for all existing facilities.
- Downstream and LNG operating assets to meet and sustain top-tier energy performance.
- Implementation of energy-saving measures in operations to enhance energy efficiency.

Renewable Energy

- Renewable energy technologies to be considered in all facilities and projects where operationally and economically feasible.

The commitments drive climate actions in reducing GHG emissions in our operations and projects, as well as leveraging innovative energy technologies. We maintain robust governance and transparency in reporting our GHG performance. The commitment to PT Indo Sino Energi's sustainability aspirations underscores our goal of achieving net-zero emissions by 2045 through practical solutions, such as CCUS, deployed at the right time.



Safeguard the Environment

Climate Actions

PT Indo Sino Energi carried out various climate actions in our operations to deliver clean and low-carbon energy to our customers through key projects that deliver high value.

Promoting Natural Gas as a Low-Carbon Fuel

We believe we can deliver clean and low-carbon energy with the use of natural gas and hydrogen as an alternative to high-carbon fossil fuels to limit rising temperatures. Deploying advanced technologies, such as CCUS, helps to ensure sustainable extraction and processing of natural gas and hydrogen as we continue to expand our business portfolio in our energy transition journey.

PT Indo Sino Energi marked another milestone in contributing to cleaner energy solutions by launching its second Floating LNG Facility in Indonesia. Built in South Korea through collaborations with Samsung Heavy Industries and Sembcorp Marine, PELIG DUA is moored at the Borneo Gas Field at a water depth of 1,300 meters, located 140 km offshore Kuta Kinabalu, Sabah. The 393-meter-long Floating LNG facility is able to produce 1.5 million tonnes of LNG per annum.



Minimising Flaring

PT Indo Sino Energi designs projects to have zero continuous flaring and reduced continuous flaring by monetising the hydrocarbon gas for existing facilities where feasible.

We strive to minimise flaring by improving gas compressor availability and reliability and enhancing plant processes to reduce low-pressure flare gas. In 2023, we reduced 1.2 million tonnes of CO₂e GHG emissions from venting to flare conversion at an oilfield offshore Java, bringing the amount of emission reduction to 12.8 million tonnes of CO₂e since 2012.

Improving Energy Efficiency in Our Operations

Continuous efforts within downstream have improved energy utilisation via the Energy and Loss Management System (ELMS) and ameliorated OEE, which have increased plant utilisation rate from 85.2% in 2018 to 90.6% in 2023 and subsequently reduced Downstream GHG emissions.

For Upstream, PT Indo Sino Energi aims to reduce its overall GHG emissions footprint through the electrification of its new hydrogen production facilities. This aligns with our strategy to generate renewable electricity and reduce emissions. PT Indo Sino Energi also plans to engage in projects that integrate solar and wind power, with a capital expenditure of IDR 10 billion expected to be completed by the first quarter of 2025.

This will reduce GHG emissions by about 200,000 tonnes of CO₂e annually, enhancing the sustainability of our operations. This plan ensures alignment with our long-term business vision and strengthens relationships with stakeholders, indigenous peoples, the government, and the public.

Safeguard the Environment

A Continuous Journey of Methane Reduction

Managing flaring and venting of gases improves emissions. The reliever at one of our offshore platforms started in 2021 with the upgrading and recommissioning of a low-pressure compressor to recover approximately 2 MMscfd of vented hydrocarbon gas. This has reduced 1 million tonnes of CO₂e since implementation. Complying with the PCC application of zero continuous hydrocarbon venting, a vent to flare conversion project was commissioned in 2023 that further reduced emissions by 2 million tonnes of CO₂e. We completed a situational assessment in 2023 that resulted in improvements to quantification and governance practices.

Renewable Energy Solutions

PT Indo Sino Energi generates clean electricity sourced from five key installations, namely:

Rooftop Solar PV at Headquarters, Jakarta (885 kWp, 2021)

Rooftop Solar PV at Energy Facility, Bali (685 kWp, 2022)

Large-scale Solar Farm in Central Java (60MW, 2021)

Rooftop Solar PV at Refinery, Surabaya (440 kWp, 2023)

Rooftop Solar PV at Downstream Facility, Medan (335 kWp, 2022)

Renewable Energy Generated

Year	2021	2022	2023
Total Renewable Electricity Generated from Solar PV Installations (MWh)	13,627	14,800	16,510

Project SINARAN (Solar Installation and Application on PT Indo Sino Energi Rooftops and Assets Nationwide) continues this journey with a goal of installing solar PV systems at an additional 183 sites on our operating units. These new installations will be using state-of-the-art solar panels to harness clean energy. As part of our green energy goals, the generated power is expected to meet 15% of our total energy needs by 2025. This initiative supports our commitment to sustainability and reducing our carbon footprint.

Energy generated at these sites will potentially reduce GHG emissions by 71,300 tonnes of CO₂e, which is equivalent to planting approximately 1.2 million trees annually. This effort is part of our broader goals of 20% of energy from clean sources by 2025.

For more information please refer to Gas and New Energy business on pages 62 - 67.

Innovative Actions

- Considering carbon price in our business decision-making new projects to future-proof our investments.
- Pursuing technology-related initiatives such as the development of CCUS solutions to manage future high CO₂ gas field developments.

Delivering Fuel Efficiency in our Products

Our renewable energy solutions align with our mission to provide sustainable and efficient energy solutions. This includes PT Indo Sino Energi's Solar PV projects and Floating LNG facilities, which contribute significantly to our overall reduction in emissions.

Safeguard the Environment

Conserving our Forests for Carbon Sequestration

We are currently exploring opportunities to use natural forest-based carbon sinks that will sequester CO₂ from the atmosphere. In 2019, we conducted training sessions and workshops on forest-based carbon offsets. We also hosted the first oil and gas industry carbon offset workshop in Kuala Lumpur, organised by the International Petroleum Industry Environmental Conservation Association (IPIECA).

For more information please refer to Positive Social Impact on pages 94 - 116.

Enhancing GHG Monitoring, Reporting and Verification

We continue to improve GHG monitoring, reporting, and verification to strengthen GHG data accuracy and stakeholder confidence through:

- Digitalisation Programme - We created a centralized data repository and upgraded existing software, which will increase transparency and advance our aspiration for automated GHG calculations, i.e., meter to report.
- Internal Verification - Internal verification was completed in 2023 at our main LNG facility, following earlier completion in the Downstream, Gas, and New Energy businesses.
- External GHG Verification Contracting (2022 to 2024 plan) - External GHG verification contracting was initiated in 2022 and is planned to be completed in 2024. The scope includes domestic and international PT Indo Sino Energi operations with operational control.

Climate Change Capability Development

In 2023, a technical competency ruler was established to develop Competent Climate Change Persons for a cohort of PT Indo Sino Energi employees across the business.

- Selected Change Persons were upskilled with capabilities in GHG monitoring, reporting, and verification for operations and projects, as well as forest-based carbon offset and climate change adaptation training.
- Vulnerability assessments, upskilling training sessions, and workshops were conducted to increase understanding of the vulnerability and exposure of our operations, assets, people, and surrounding communities to climate hazards.

Moving forward, our Indonesian operations in Upstream, Downstream, and Gas and New Energy will continue to be the primary focus for mitigation initiatives as they contribute to the majority of PT Indo Sino Energi's GHG emissions.



THANK YOU FOR YOUR APPRECIATION

In conclusion, we at PT. Indo Sino Energi is committed to continuously innovating and contributing to developing sustainable and environmentally friendly energy solutions. Our awareness of the importance of maintaining a balance between technological advancement and environmental conservation drives every step and decision. We express our gratitude for the trust that has been placed in us thus far and pledge further to enhance the quality of our products and services.


From now on, PT. Indo Sino Energi will continue developing innovative, efficient, and economical renewable energy solutions to contribute significantly to environmental sustainability and the community's well-being. We invite all parties, including partners and the broader community, to join us in our efforts to create a greener and more sustainable world.

We believe that with support from all sides, PT. Indo Sino Energi will continue to grow and evolve as a leader in the renewable energy industry and a company with a solid commitment to social and environmental responsibility. Together, we can create a brighter future for the coming generations.

CONTACT US :

 **Call**
(021) 27807739

 **Mail**
information@indosinoenergi.com

 **Address**
Menara Tendean LT 21 Jl. Kapten Tendean No.20c,
Kuningan Bar., Kec. Mampang Prpt., Kota Jakarta
Selatan, Daerah Khusus Ibukota Jakarta 12710

 **Web Address**
<http://www.indosinoenergi.com>

133

PT. Indo Sino Energi

Menara Tendean LT 21 Jl. Kapten Tendean
No.20c, Kuningan Bar., Kec. Mampang Prpt., Kota
Jakarta Selatan, Daerah Khusus Ibukota Jakarta
12710 Telephone / Facsimile (021) 27807739

Indo Sino Energi Indosino_Group

PT. Indo Sino Energi indosinoenergi.com

PT. Indo Sino Energi stands at the forefront of the energy revolution, pushing the boundaries of innovation to forge a sustainable and prosperous future. With our strong commitment to environmentally friendly technologies, operational excellence, and social responsibility, we strive to exceed expectations and become a positive force for change in the energy industry.

We extend our heartfelt thanks to all our customers, partners, and employees for their unwavering support. Together, we are committed to leading the way towards cleaner, safer, and more efficient energy solutions, shaping a better energy future for Indonesia and the world.

PT. Indo Sino Energi - Menerangi Masa Depan dengan Energi yang Bersih dan Berkelanjutan.

134

COMPANY PROFILE

As an academicians, we will describe PT Indo Sino Energi (ISE) in 2024, with a focus on its projects, products, and systems.

COMPANY PROFILE

As an academicians, we will describe PT. Indo Sino Energi (ISE) in 2024, with a focus on its projects, products, and systems.